

SV1C

Ultra-Heavy Duty Rotating Operator Armchair System

Models:

SV1CA – Flat consoles, bolted to the pedestal.

SV1CJ – Inclining outward slope consoles, bolted to the pedestal.

SV1C-88 – 30° declining forward slope consoles, bolted to the pedestal.

Features:

- SEAT – Actimo seat standard
- CONTROL CONSOLES – Heavy-duty steel consoles bolted to the pedestal for rigid support of heavy mill duty master switches and multiple pilot devices.
- SLIDES FORE & AFT – A lever is located on the left front side of the seat allowing the operator to adjust the seat independent of the consoles and controllers.
- ROTATING BASE - By pushing down on the hand brake lever, the chair can be rotated to the desired work location or for entrance and exit. Pulling up on the lever will reset the brake. Rotational stops can be located at 90° intervals within the 270° rotation to limit rotational travel.
- ARMRESTS – Thumbscrews allow for vertical adjustment. SV1C-88 armrests include a tilt adjustment to take advantage of the forward sloped consoles.



Options:

- Armrests with horizontal, vertical and tilt adjustments.
- Ash tray
- Console vents
- Drink holder
- Floor slide
- Footrest (fixed and adjustable models).
- Foot pedals
- Hydraulic brake support
- Motorized rotate
- Motorized seat adjustments
- Pin lock foot brake
- Sliding consoles
- Sub panels
- Operator Interface Systems (swing arms and enclosures for displays).
- CONTROLS - 1, 2 & 3 Axis Joysticks and Master switches can be supplied to your specific requirements for step and stepless control of Variable Speed Drives and Electro-Hydraulic valves. Pilot devices such as push-buttons, indicator lights, selector switches, digital displays, etc., are also available, mounted and wired to your specifications.

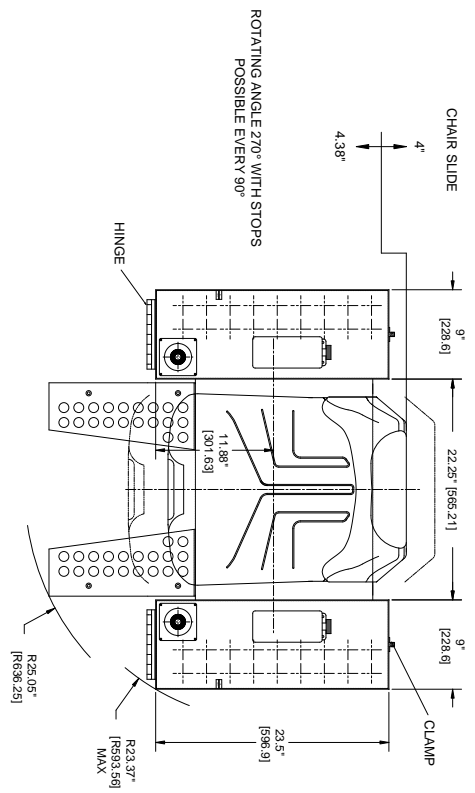
Custom Size Consoles, Special Accessories and Engineering Services are available upon request.

For detailed information about the seat's benefits, features and options see Actimo Literature.

J.R. MERRITT 
CONTROLS, INC. 

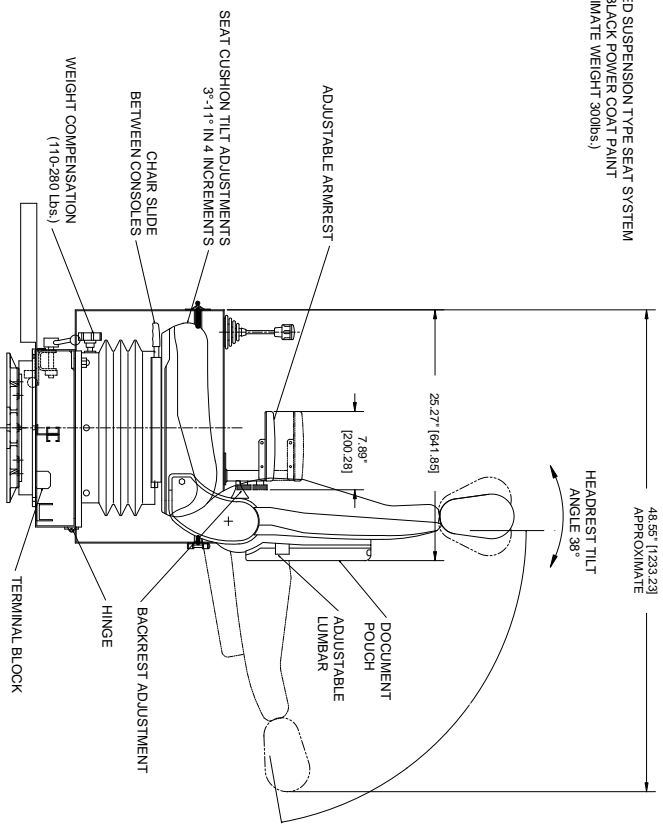
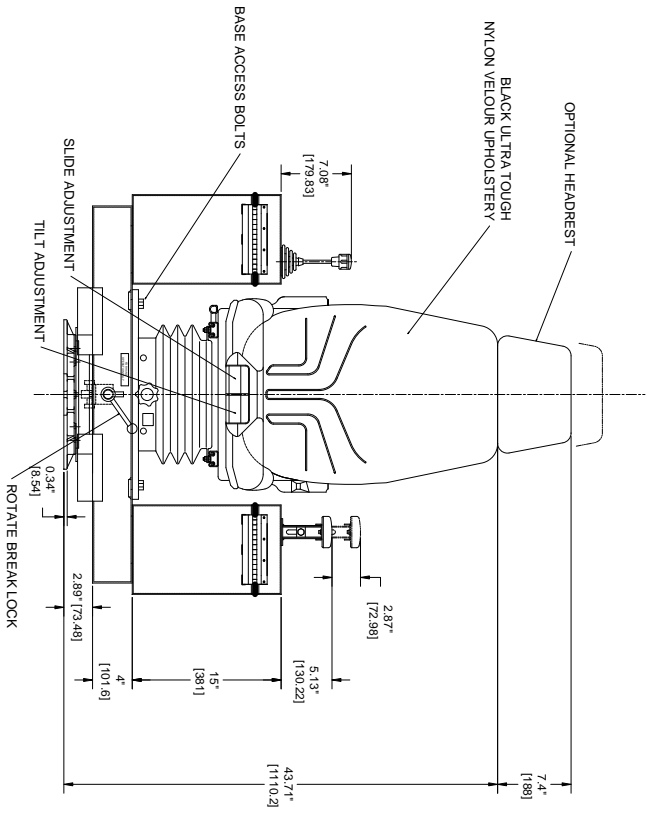
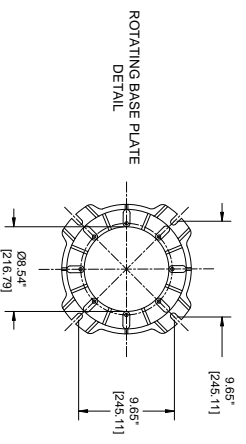
Stratford, CT • 1-800-333-JRMC • www.jrmerritt.com

The purpose of this document is for sales clarification only. Some options may not be drawn to scale. This drawing is a generic representation of a custom built product. Design and dimensions are subject to change to as built. Please consult factory if dimensions are critical or if a certified drawing is required.



CONSOLES	MAX. RADIUS
12.5"	26.7"
13.5"	27.34"
15"	28.7"

FULL BODY CONTOURED SUSPENSION TYPE SEAT SYSTEM
 FINISHED IN BLACK POWER COAT PAINT
 (APPROXIMATE WEIGHT 300LBS.)



REV.	DATE	BY	DESCRIPTION
01	06/08/01	G.Z.	UPDATED TO ACTUAL DIMENSIONS
02			
03			
04			

REV.	DATE	BY	DESCRIPTION
05			
06			
07			
08			

J.R. MERRITT
CONTROLS, INC.
 STRATFORD, CT 06615

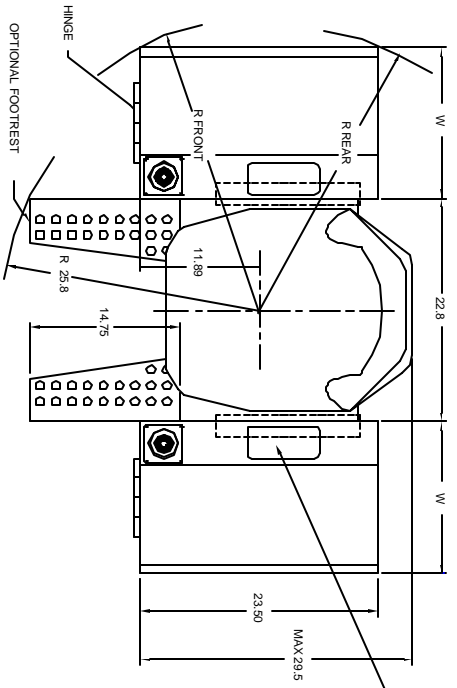
THIS DOCUMENT CONTAINS DATA WHICH IS CONFIDENTIAL AND NOT TO BE REPRODUCED OR ANY USE OF ANY PART OF THIS DOCUMENT OR ANY INFORMATION CONTAINED THEREIN WITHOUT THE WRITTEN PERMISSION OF J.R.M.C.

TOLERANCES	SCALE:	CUSTOMER:
ALL DIMS IN INCHES U.S.	1:14	
X .005	DRAWN: MAS	
XX .010	CHECKED: MAS	
XXX .015	DATE: 10/07/96	
XXXX .020	DATE:	
UNLESS OTHERWISE NOTED	DATE:	

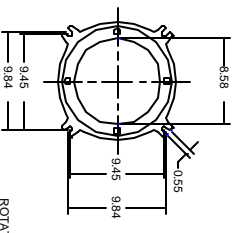
QUOTE #	JOB #	REFERENCE #
SV10CA APPROXIMATE OVERALL DIMS.		

DRAWING # B61.101.1923 SHEET # 1 OF 1 REV. 01

* SV1CJ RADIUS INFORMATION			
W	R FRONT	R REAR	
12.0 (305)	Y 28.0 (660)	Y 28.0 (660)	
15.0 (381)	Y 28.0 (737)	Y 28.5 (762)	

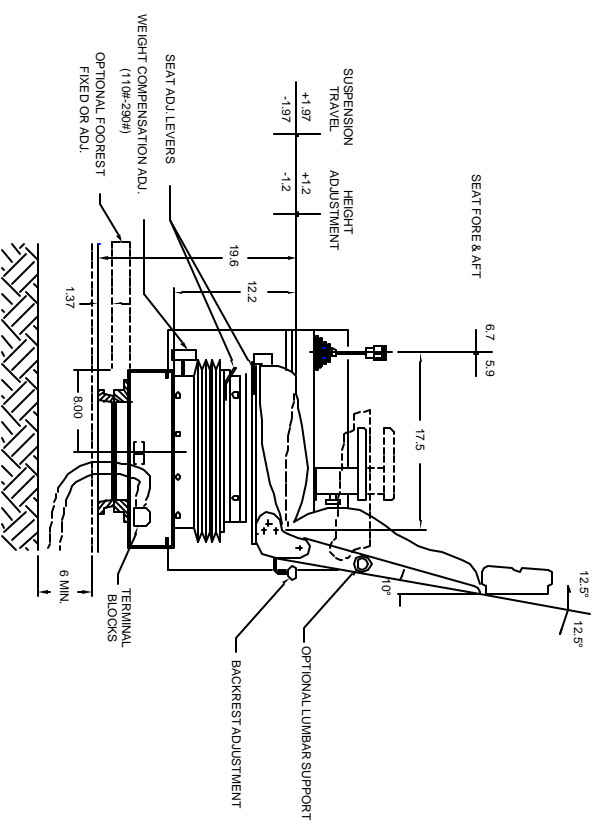
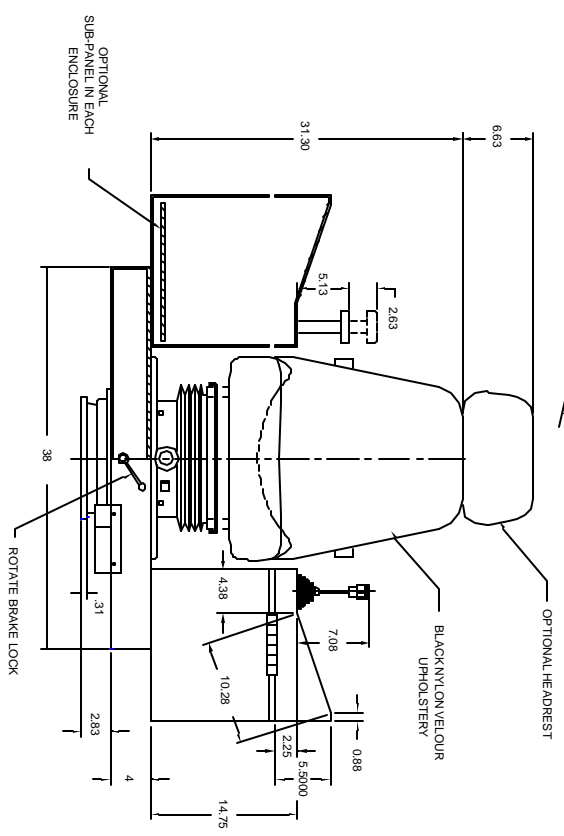


ROTATING ARMCHAIR



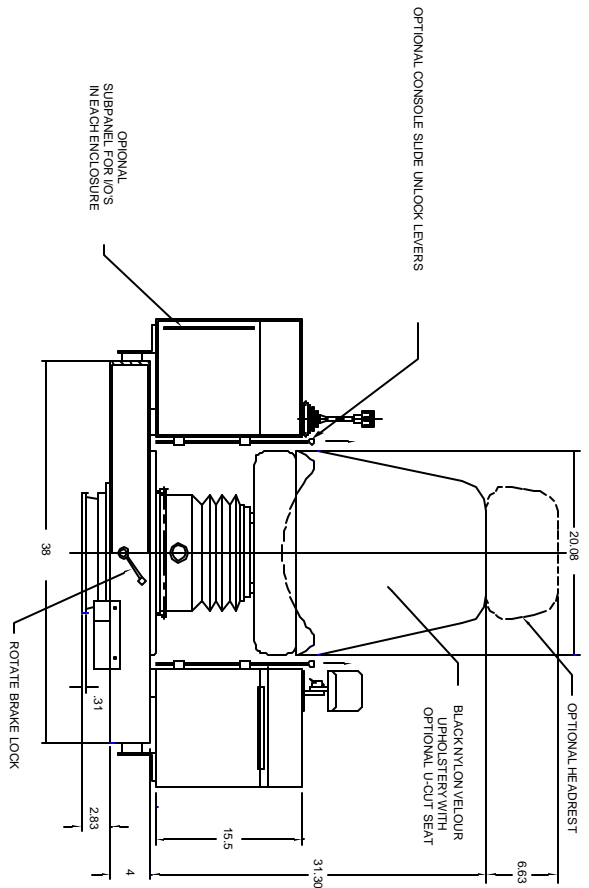
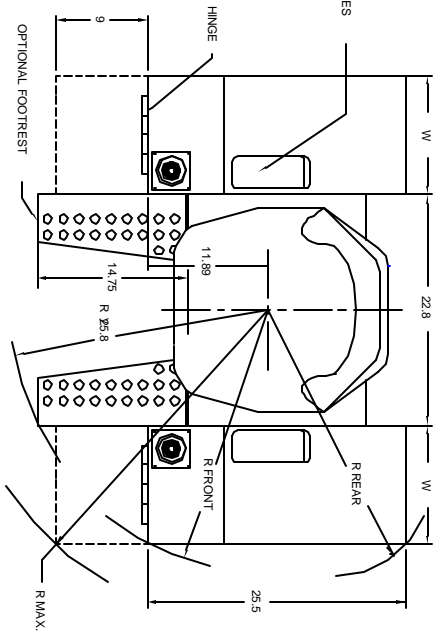
ROTATING ANGLE 270° WITH STOPS POSSIBLE AT 9° INCREMENTS

FULL BODY CONTOURED SUSPENSION TYPE SEAT SYSTEM
FINISHED IN BERGE 2 PART LAQUER

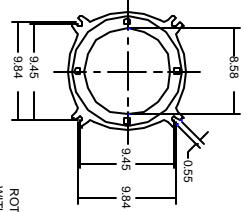


SCALE: 1:12	DATE: 10/7/96	NAME: LINO GA	 STRATFORD, CT 06815	DESCRIPTION	SV1CJ OVERALL DIMENSIONS	CUST.:	REF.:	DWG. NO.	REV.	SHEET
JOB NO.:		B61.101.1755				OP	1			

* SV1C-88 RADIUS INFORMATION					
W	R FRONT	R REAR	R MAX	Y	R MAX
12.0 (305)	Y 26.5 (673)	Y 27.5 (700)	Y 32.0 (813)	Y	33.0 (838)
13.5 (343)	Y 28.0 (711)	Y 29.0 (737)	Y 33.0 (838)	Y	34.0 (864)
15.0 (381)	Y 29.0 (737)	Y 30.0 (762)	Y 34.0 (864)	Y	

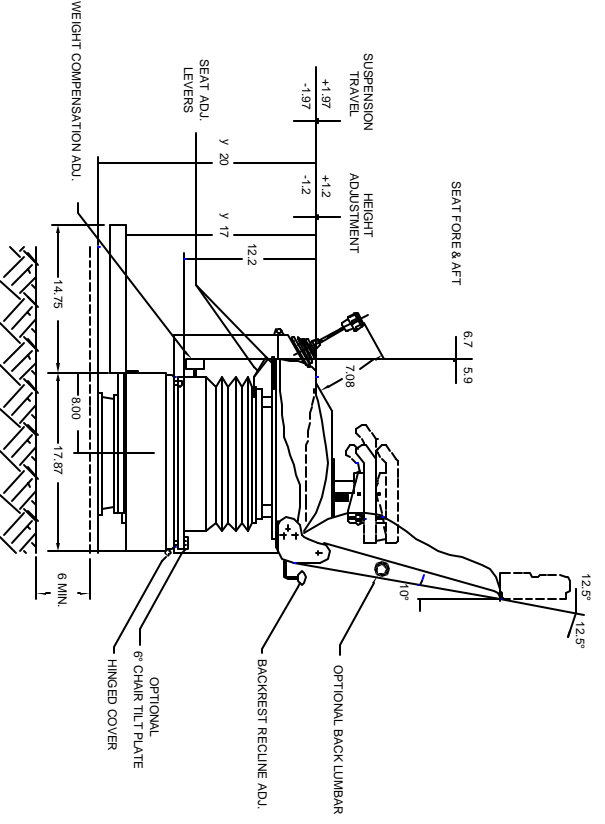


ROTATING ARMCHAIR



ROTATING ANGLE 270° WITH STOPS POSSIBLE AT 9° INCREMENTS

FULL BODY CONTOURED SUSPENSION TYPE SEAT SYSTEM FINISHED IN BERGE 2 PART LAQUER



SCALE:	DATE:	NAME:		DESCRIPTION	CUST:	JOB NO:	REF:	DWG NO.	REV.	SHEET
1:12	10/7/96	M.A.S								

B61.101.2037