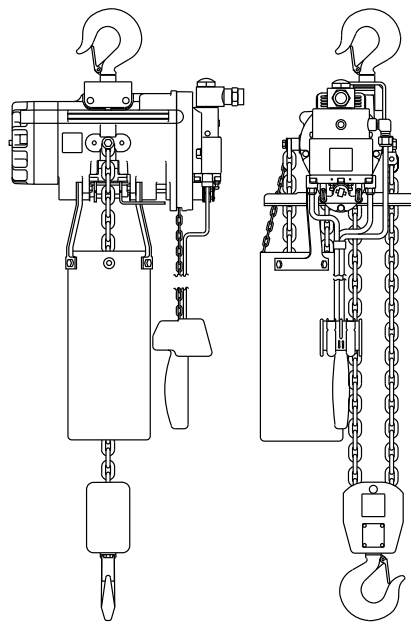


# Product Parts Information



---

## Air Chain Hoist MLK Series



(Dwg. MHP0456)



**Save These Instructions**



Form 47112669  
Edition 1  
May 2013  
© 2013 Ingersoll-Rand

Only allow **Ingersoll Rand** trained technicians to perform maintenance on this product. For additional information contact **Ingersoll Rand** factory or nearest Distributor.

**For additional supporting documentation refer to Table 1 'Product Information Manuals' on page 2.**

**Manuals can be downloaded from <http://www.ingersollrandproducts.com>.**

The use of other than genuine **Ingersoll Rand** replacement parts may result in safety hazards, decreased performance and increased maintenance and will invalidate all warranties.

Original instructions are in English. Other languages are a translation of the original instructions.

Refer all communications to the nearest **Ingersoll Rand** Office or Distributor.

**Table 1: Product Information Manuals**

Publication	Part/Document Number	Publication	Part/Document Number
Product Safety Information Manual	MHD56295	Product Maintenance Information Manual	47099007
Product Information Manual	47112677		

## TABLE OF CONTENTS

Description	Page No.	Dwg. Name	Page No.
Parts Ordering Information .....	3		
Hoist Assembly Drawing .....	4	(Dwg. MHP3259) .....	4
Hoist Assembly Parts List .....	5		
Hoist Assembly Parts List Continued .....	6		
Hoist Sub - Assembly Drawing .....	7	(Dwgs. MHP3242 and MHP3243) .....	7
Hoist Sub - Assembly Drawing .....	8	(Dwgs. MHP3240 and MHP3239) .....	8
Hoist Sub-Assembly Drawing .....	9	(Dwg. MHP3238) .....	9
Pendant And Hose Assembly Drawing .....	10	(Dwgs. MHP3241, MHP3245 and 04612776) .....	10
Pendant And Hose Assembly Parts List .....	11		
Single Line Hoist Hook Assembly Drawing and Parts List .....	12	(Dwgs. MHP3247 and MHP3248) .....	12
Single Line Hoist Hook Assembly Drawing and Parts List (Spark resistant) .....	13	(Dwg. MHP3252) .....	13
Double Line Hoist Hook Assembly Drawing and Parts List .....	14	(Dwgs. MHP3253 and MHP3254) .....	14
Trolley Assembly Parts List .....	15		
Trolley Assembly Parts List Continued .....	16		
Installation Instructions For Fabric Container Kits .....	17	(Dwgs. MHP3236 and MHP3237) .....	17
Accessories .....	18		
Repair And Conversion Kits .....	18		
Decals For MLK Series Hoists .....	19	(Dwg. MHP3246) .....	19

---

## PARTS ORDERING INFORMATION

---

These products are designed and constructed to provide long, trouble-free service. In time it may be necessary to order and install new parts to replace those that have been subjected to wear.

For your convenience and future reference, it is recommended that the following information be recorded.

**Model Number** \_\_\_\_\_

**Serial Number** \_\_\_\_\_

**Date Purchase** \_\_\_\_\_

When ordering replacement parts, please specify the following:

1. Complete model number and serial number as it appears on the data (name) plate.
2. Part number(s) and part description as shown in this manual.
3. Quantity required.

The data (name) plate is located on the product.

### NOTICE

- **Continuing improvement and advancement of design may cause changes to this equipment which are not included in this manual. Manuals are periodically revised to incorporate changes. Always check the manual edition number on the front cover for the latest issue.**
- **Sections of this manual may not apply to your product.**
- **The use of other than genuine Ingersoll Rand replacement parts may result in safety hazards, decreased performance and increased maintenance, and will invalidate all warranties.**

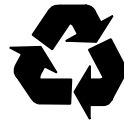
---

### ■ Return Goods Policy

**Ingersoll Rand** will not accept any returned goods for warranty or service unless prior arrangements have been made and written authorization has been provided from the location the goods were purchased.

Products that have been modified without **Ingersoll Rand** approval, mishandled or overloaded will not be repaired or replaced under warranty. A printed copy of the warranty that applies to this product is provided inside the back cover of the product information manual or in some cases the parts manual.

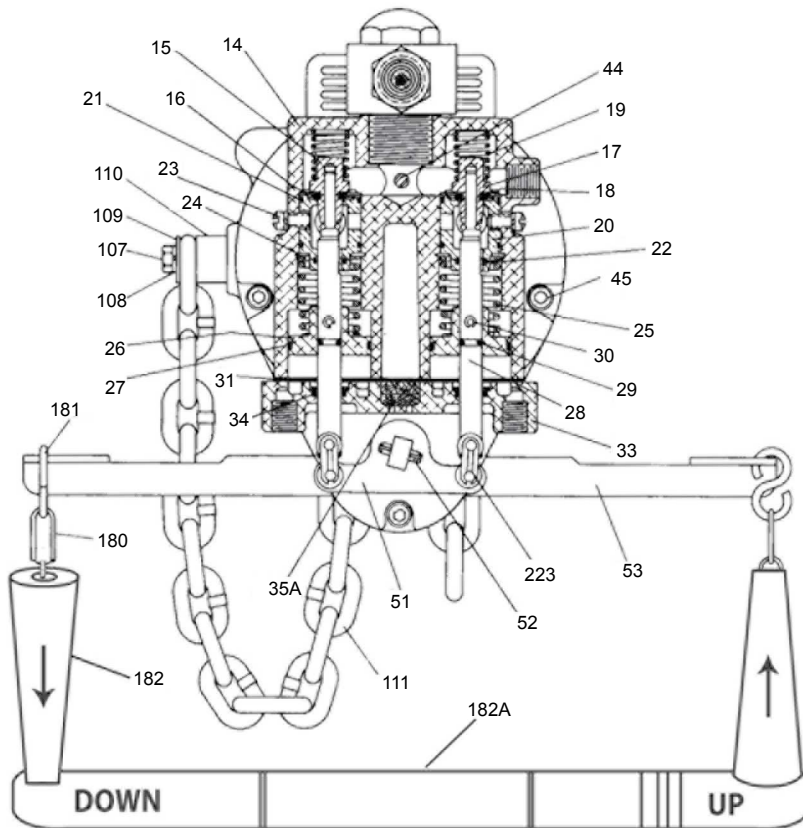
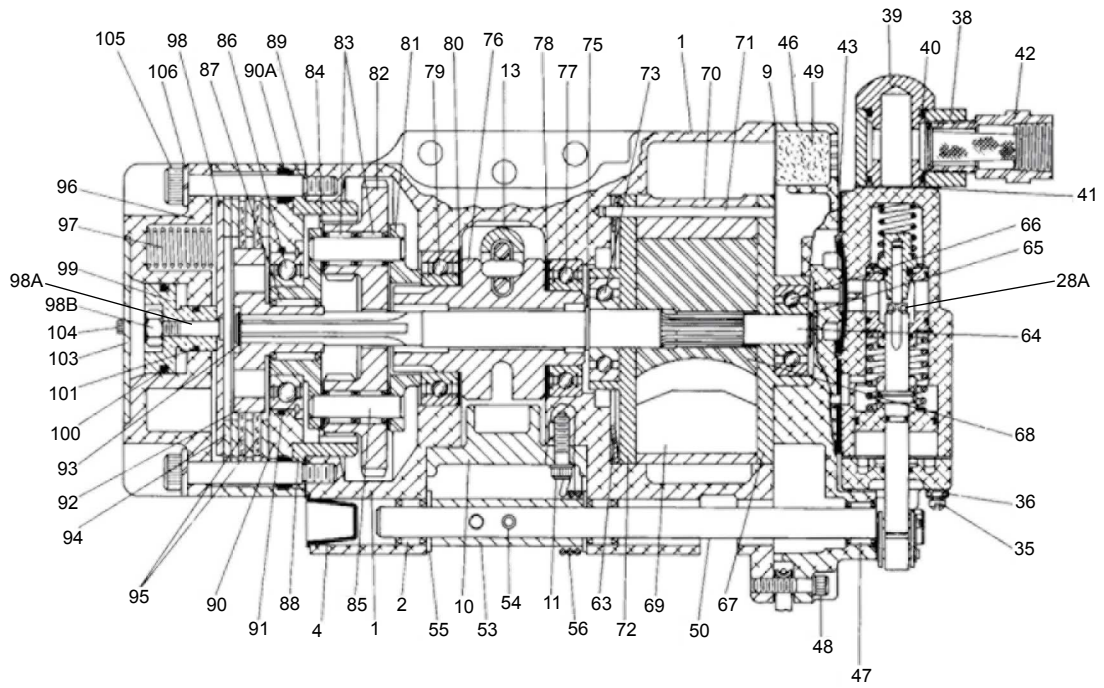
### ■ Disposal



When the life of the product has expired, it is recommended that it be disassembled, degreased and parts separated as to materials so that they may be recycled.

Refer all communications to the nearest **Ingersoll Rand** Office or Distributor.

# HOIST ASSEMBLY DRAWING



(Dwg. MHP3259)

## HOIST ASSEMBLY PARTS LIST

Item No.	Description of Part	Total Qty	Part Number	Item No.	Description of Part	Total Qty	Part Number
1	Housing Assembly (Note 1)	1	ML50K-A300-S	51	Limit Actuator	1	MLK-251A
* 2	Throttle Shaft Bearing	2	R38M-603	52	Limit Actuator Retaining Pin	1	WF171-15
3	Vent Plug	1	P250-546	53	Throttle Lever	1	ML50K-556
4	Throttle Shaft Plug	1	ML50K-29	54	Throttle Lever Retaining Pin	1	WF171-15
*5A	Nameplate †	1	MLK-301N	55	Throttle Lever Thrust Washer	2	MR-458
*5B	Nameplate ‡	1	MLK-301M-RS	56	Throttle Shaft Spring	1	MR-412
*6	Nameplate Screw	2	R4K-302	57	Brake Tube	1	ML50K-401
7	Warning Label	1	71289326	58	Brake Tube Seal	2	ML50K-21
* 9	Housing Gasket	1	ML50K-445	59	Brake Tube Housing Seal	1	PS3-67
10	Chain Guide	1	ML-741C	63	Motor Retaining Washer	1	MR-207
11	Chain Guide Screw (Pack of 4 use 4)	1	34U-463-4	Motor Assembly (Note 7)			
*12	Lockwasher	4	4U-58-10	---	ML250K, ML500K, and ML1000K	1	MLK-A53A
13	Chain Guard	2	ML-6A	---	ML250KR, ML250KS, ML500KR, ML500KS, and ML1000KS		MLK-AR53A
*13A	Guard Retaining Screw	2	G57T-634	---	Motor Shaft Kit (Note 8)		1
*13B	Lockwasher (Pack of 10 use 2)	1	L01-67-10	---	Motor Shaft	1	Order Kit
---	Valve Chest Assembly (Note 2)	1	MLK-A545B	64	Motor Shaft Rear Retaining Ring	1	MLK-120
14	Valve Chest	1	MLK-545A	* 65	Rear End Plate Bearing	1	R2-24
15	Up Valve Assembly	1	MLK-K102U	* 66	Rear End Plate	1	MR-12
* 16	Up Valve Seal	1	MLK-211	67	Rotor	1	MR-53
17	Down Valve Assembly	1	MLK-K1102D	68	Vane Packet with Springs	1 Set	MLK-K4243-7
* 18	Down Valve Seal	1	MLK-211	* 69	Vane Springs	1 Set	MLK-43-7
19	Valve Spring	2	MLK-942A	69A	Cylinder	1	MR-3A
20	Valve Seat Assembly (Note 3)	2	MLK-K615	70	ML250K, ML500K, and ML1000K		
* 21	Valve Seat Seal	2	C321-606		ML250KR, ML250KS, ML500KR, ML500KS, and ML1000KS		
* 22	Valve Seat Shaft Seal	1	R000BR-210				
23	Valve Seat Lock Screw	2	AF160-305	71	Cylinder Dowel		R3H-434
* 24	Valve Seat Retainer	2	MLK-218	72	Front End Plate	1	MR-11
25	Piston Spring	2	MLK-250A	* 73	Front End Plate Bearing	1	TB-394
26	Piston Assembly	2	MLK-K246A	* 75	Motor Shaft Front Retaining Ring	1	MLK-119
* 27	Piston Seal	1	HLK-103	76	Chain Wheel	1	ML-740B
28	Piston Shaft Assembly (Note 4)	2	MLK-K655A	* 77	Chain Wheel Plain End Bearing	1	MR-593
28A	O' ring	1	Y330-006	78	Chain Wheel Plain End Washer	1	MR-974
* 29	Piston Shaft Seal	1	ROBR1C-283	* 79	Chain Wheel Splined End Bearing	1	MR-988
30	Piston Retaining Pin	1	510-669A	80	Chain Wheel Splined End Washer	1	MR-975
31	Valve Chest Cover Gasket	1	MLK-117A	Gear Frame Assembly (Note 9)			
32	Valve Chest Cover Pin	2	MLK-241	---	ML250K and ML250KS	1	ML25K-A8
33	Valve Chest Cover Assembly (Note 5)	1	MLK-A238A	---	ML500K, ML500KS, ML1000K, ML1000KS, ML250KR, and ML500KR		ML50K-A8
* 34	Valve Chest Cover Seal	2	R000BR-210	81	Planet Gear Frame	1	ML25K-8
35	Bleed Adjustment Screw	2	MLK-370		ML250K and ML250KS		
35A	Muffler	2	MLK-236		ML500K, ML500KS, ML1000K, ML1000KS, ML250KR, and ML500KR		
36	Adjustment Screw Locknut	2	Q1-121		Planet Gear Assembly (Note 10)		
37	Valve Chest Cover Screw	6	MLK-240	---	ML250K and ML250KS	2	MR5-A10
---	Swivel Inlet Assembly (Note 6)	1	MLK-A4	---	ML500K, ML500KS, ML1000KS, ML250KR, and ML500KR		MR-A10
38	Inlet Body	1	MLK-166	82	Planet Gear Bearing (2 each/gear)	1	ML50K-654
39	Inlet Nipple	1	MLK-4A	84	Planet Gear Thrust Washer	4	ML50K-361
* 40	Swivel Inlet Seal	2	R4-210	85	Planet Gear Shaft	2	MR-191
* 41	Swivel Inlet Gasket	1	R18LF-21	86	Gear Frame Bearing	1	ML50K-97
42	Inlet Strainer	1	MLK-82	* 87	Brake Driver Bearing	1	ML50K-318
* 43	Valve Chest Gasket + (2 round)	1 set	MLK-928-80	88	Ring Gear	1	ML50K-406A
44	Valve Chest Screw	1	518-104	* 89	Ring Gear Gasket	1	ML50K-31
45	Valve Chest Screw (Pack of 4 use 2)	1	R0H-354-4	90	Brake Housing	1	ML50K-346
46	Valve Chest Plate	1	MLK-549	* 90A	Brake Housing Bolt Seal	4	ML50K-271
* 47	Throttle Lever Bearing	1	R38M-603	* 91	Brake Housing Bearing Seal	1	HRA20A-990
48	Valve Chest Plate Screw (Pack of 4 use 5)	2	5080-638-4				
49	Muffler	2	MLK-175				
50	Throttle Shaft	1	MHLK-255				

## HOIST ASSEMBLY PARTS LIST CONTINUED

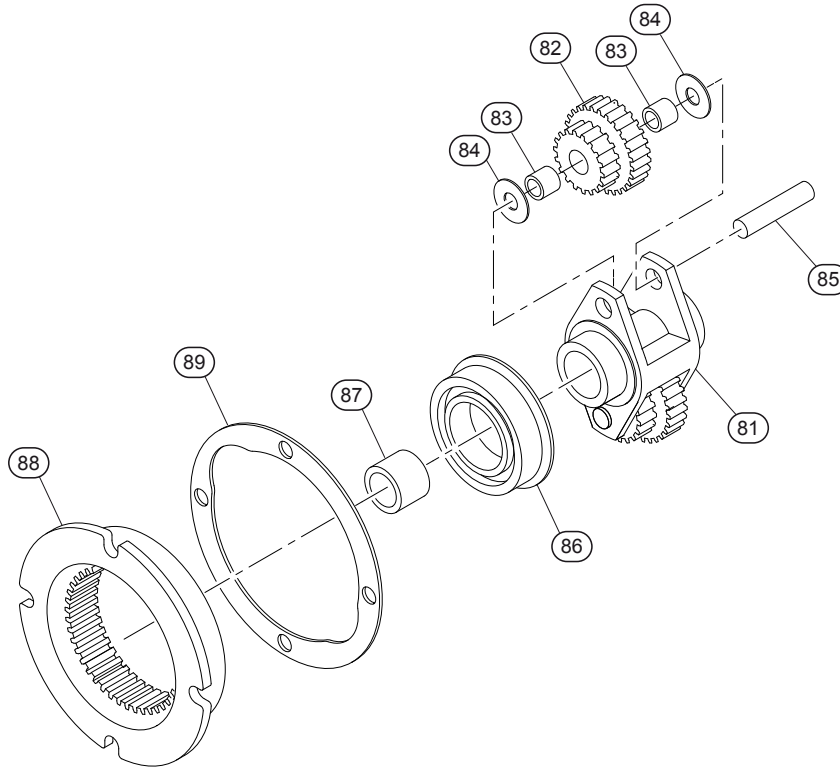
Item No.	Description of Part	Total Qty	Part Number	Item No.	Description of Part	Total Qty	Part Number
92	Brake Driver	1	ML50K-842	111	Zinc Plated Chain	#	M745Z
• 93	Brake Driver Retainer	1	ML50K-729		ML250KR and ML500KR only Stainless Steel		M745S
94	Brake Plate	4	ML50K-834A	*	1/4 ton Label (for ML250K Housing)	2	48379853
• 95	Brake Disc Kit (Note 11)	1 Set	MLK-ABK1	*	1/4 ton Label (for ML250KR Housing)	2	48379861
96	Brake Spring, Piston Housing Assembly (Note 12)	1	MLK-A395A	*	1/2 ton Label (for ML500K Housing)	2	48379879
97	Spring	3	MLK-832	*	1/2 ton Label (for ML500KR Housing)	2	48379895
98	Pressure Plate Assembly	1	ML50K-K338A	*	1 ton Label (for ML1000K Housing)	2	48379903
98A	Pressure Plate Screw	1	ML50K-805A	*	I-R Label (for Valve Chest)†	1	HRA20A-201
98B	Piston Nut	1	ML50K-394	*	I-R Label (for Valve Chest)‡	1	47150743
99	Piston Assembly	1	ML50K-A809	*	I-R Label (for Brake Plate)	1	48379846
• 100	Piston Large Seal	1	R2C-103	*	Bleed Screw Adjustment Tag	1	TA-INS-150
• 101	Piston Small Seal	1	MLK-210	180	Pull Chain (specify total length for (2) Chains required)		
103	Plate	1	ML50K-981		Standard Hoists	#	37657-XXX-X
104	Plate Screw	2	CE110-354		Spark Resistant Hoists		D02-1413
105	Shoulder Bolt	4	ML50K-7		---	Pull Chain Hardware Kit	1
106	Lockwasher (Pack of 10 use 4)	1	D02-321-10	181	S-Hook	2	37659
107	Chain Anchor Bolt	1	R0H-354	182	Handle	2	33268
108	Lockwasher (Pack of 10 use 1)	1	L01-67-10	182A	Control Handle	1	33322
109	Flat Washer	1	B12-265	* 182B	Anchor Chain	2	37723
110	Chain Anchor Bolt Spacer	1	ML50K-145	183	1/4 in. Pipe Plug	1	R0H-377
111	Load Chain (Note 13)			184	Pipe Plug	2	P250-546

•	Recommended Spare
*	Not Shown
#	Specify length in feet
†	For Serial Numbers Starting with WI
‡	For Serial Numbers Starting with SPH or KTW

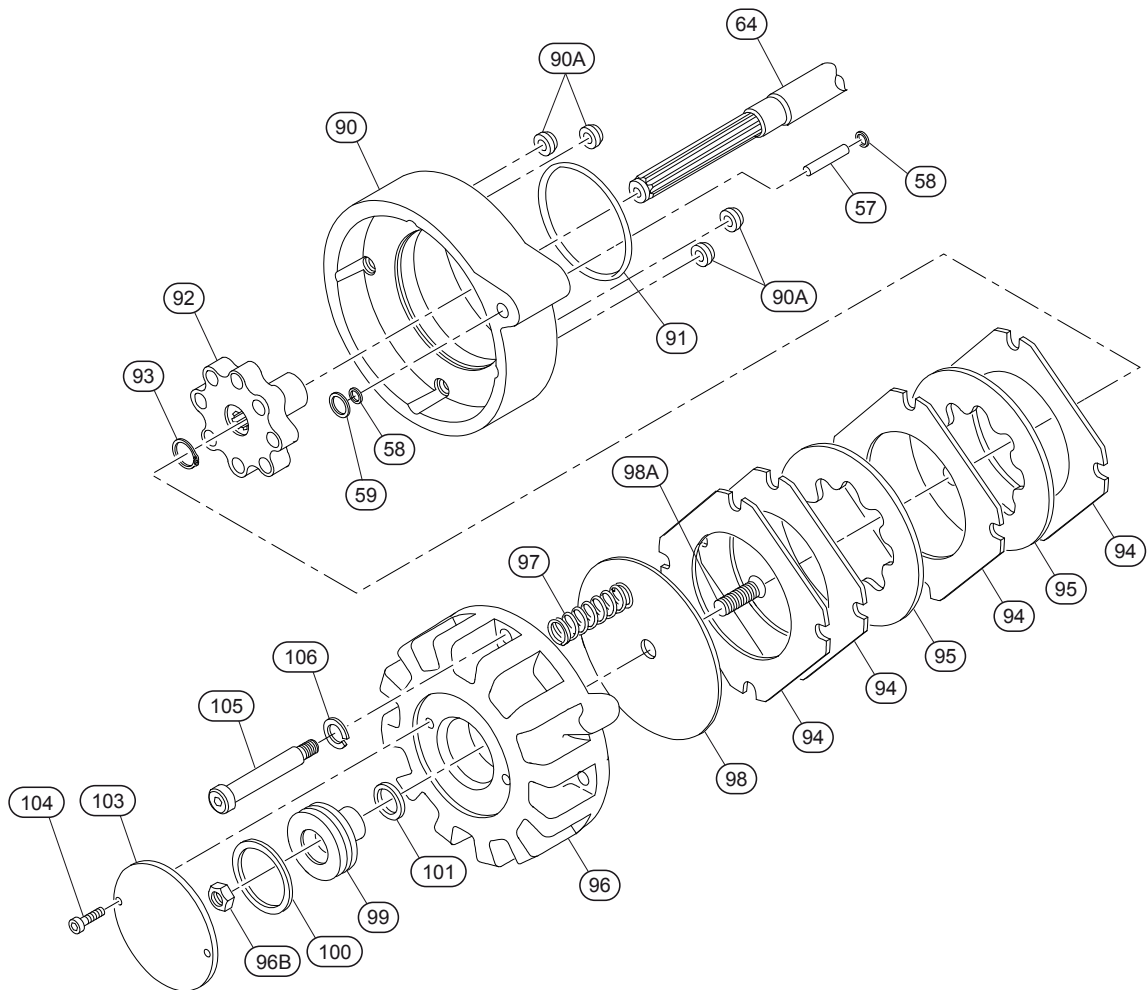
### Kits and Notes Information

Item No.	Description of Part	Total Qty	Part Number
<b>Note 1</b>	Housing Assembly (includes items 2–7)	1	ML50K-A300-S
<b>Note 2</b>	Valve Chest Assembly (includes items 14–42)	1	MLK-A545B
<b>Note 3</b>	Valve Seat Assembly (includes items 21 and 22)	2	MLK-K615
<b>Note 4</b>	Piston Shaft Assembly (includes items 28A, 29, and 30)	2	MLK-K655A
<b>Note 5</b>	Valve Chest Cover Assembly (includes item 34)	1	MLK-A238A
<b>Note 6</b>	Swivel Inlet Assembly (includes items 38–42)	1	MLK-A4
<b>Note 7</b>	Motor Assembly (includes items 64–73, and 75)	1	---
	ML250K, ML500K, and ML1000K		MLK-A53A
	ML250KR, ML250KS, ML500KR, ML500KS, and ML1000KS		MLK-AR53A
<b>Note 8</b>	Motor Shaft Kit (includes items 64, 65, 75, and 93)	1	ML50K-316
<b>Note 9</b>	Gear Frame Assembly (includes 81–87)	1	---
	ML250K, ML500K, and ML1000K		ML25K-A8
	ML250KR, ML250KS, ML500KR, ML500KS, and ML1000KS		ML50K-A8
<b>Note 10</b>	Planet Gear Assembly (includes item 83)	1	---
	ML250K, ML500K, and ML1000K		MR5-A10
	ML250KR, ML250KS, ML500KR, ML500KS, and ML1000KS		MR-A10
<b>Note 11</b>	Brake Disc Kit (includes items 97, 100, and 101)	1	MLK-ABK1
<b>Note 12</b>	Brake Spring and Piston Housing Assembly (includes items 97–104)	1	MLK-A395A
<b>Note 13</b>	When ordering "Length as Specified" chain for ML250KS, ML500KS or ML250KR Hoists, specify a chain length 2 feet longer than the required lift. When ordering "Length as specified" for ML1000KS or ML500KR Hoists specify a length 3 feet longer than twice the required lift. Chains for the ML1000KS and ML500KR Hoists must contain an even number of Links when installed on the hoist.		---

# HOIST SUB - ASSEMBLY DRAWING



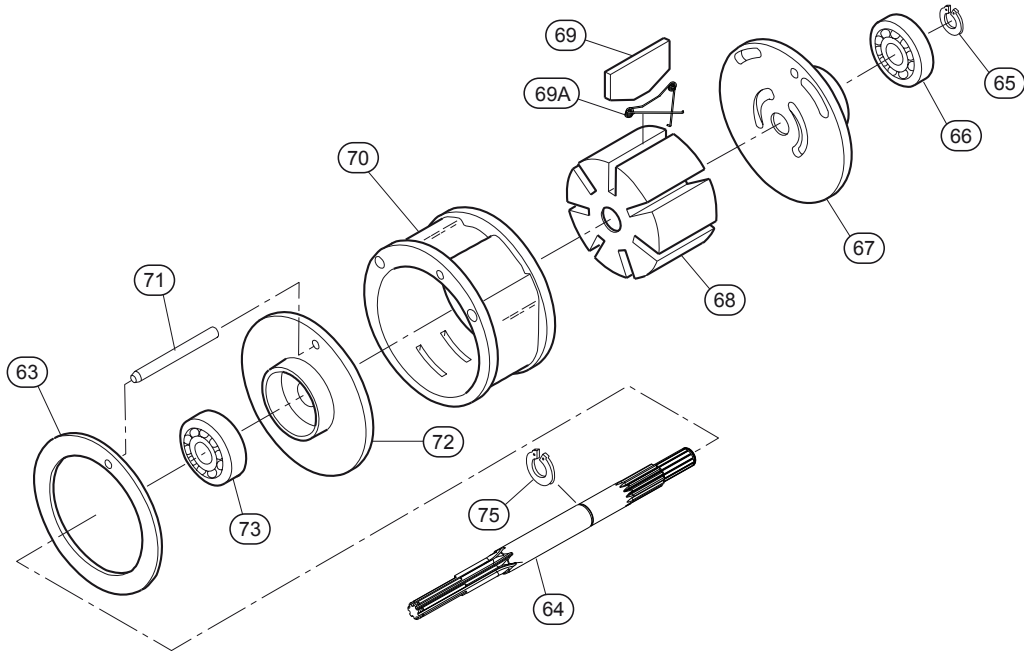
(Dwg. MHP3242)



(Dwg. MHP3243)

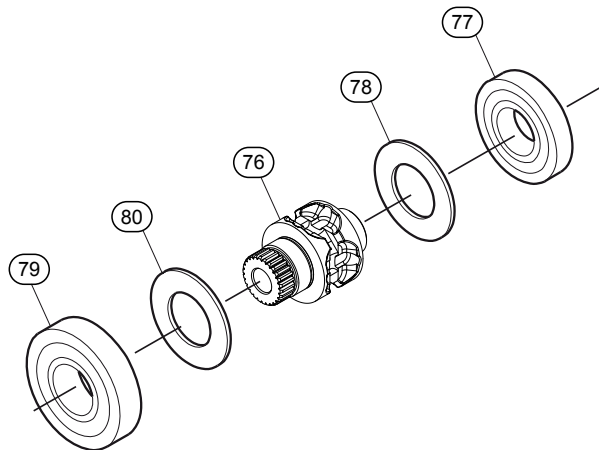
# HOIST SUB - ASSEMBLY DRAWING

## Motor Parts



(Dwg. MHP3240)

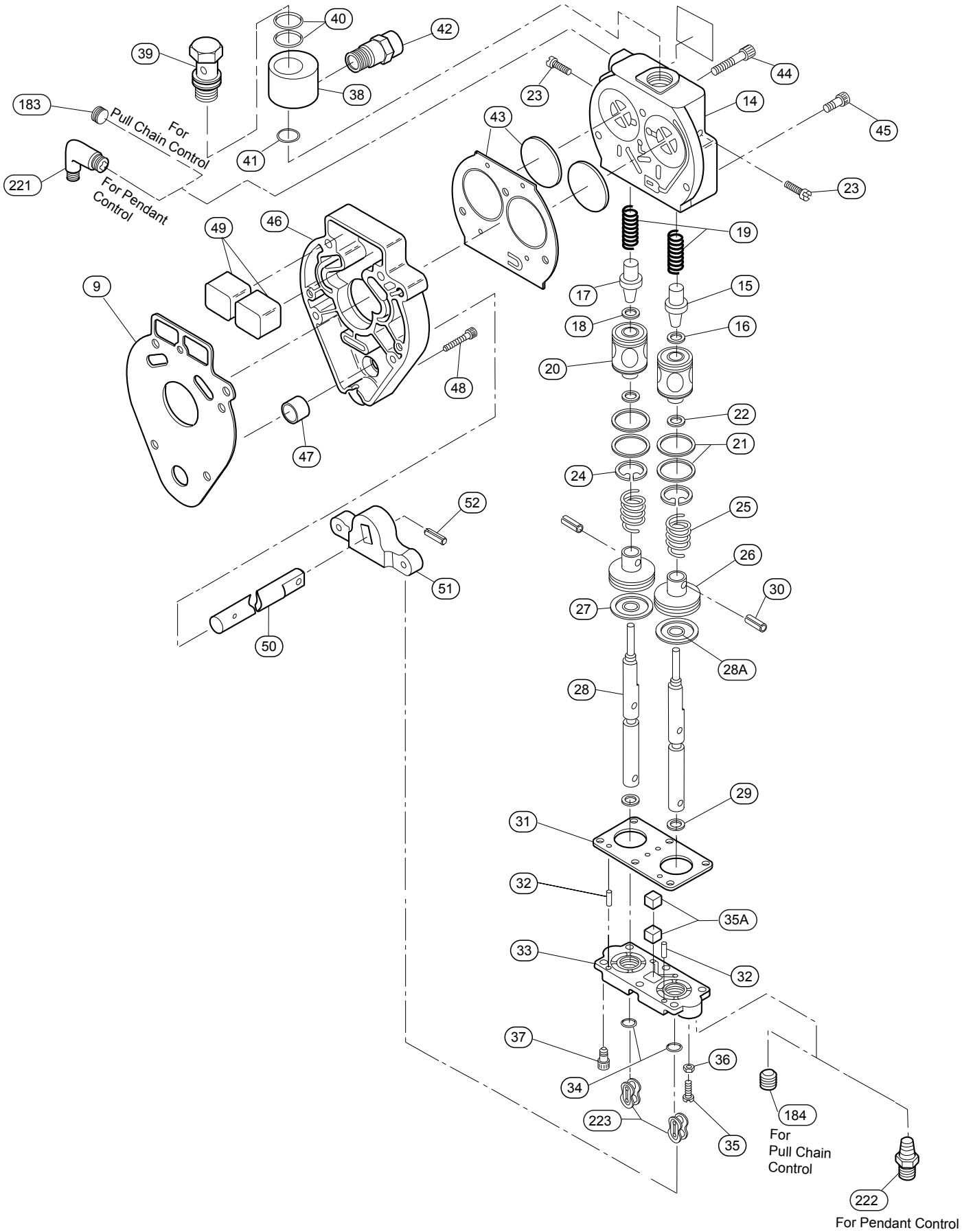
## Chain Wheel Assembly



(Dwg. MHP3239)

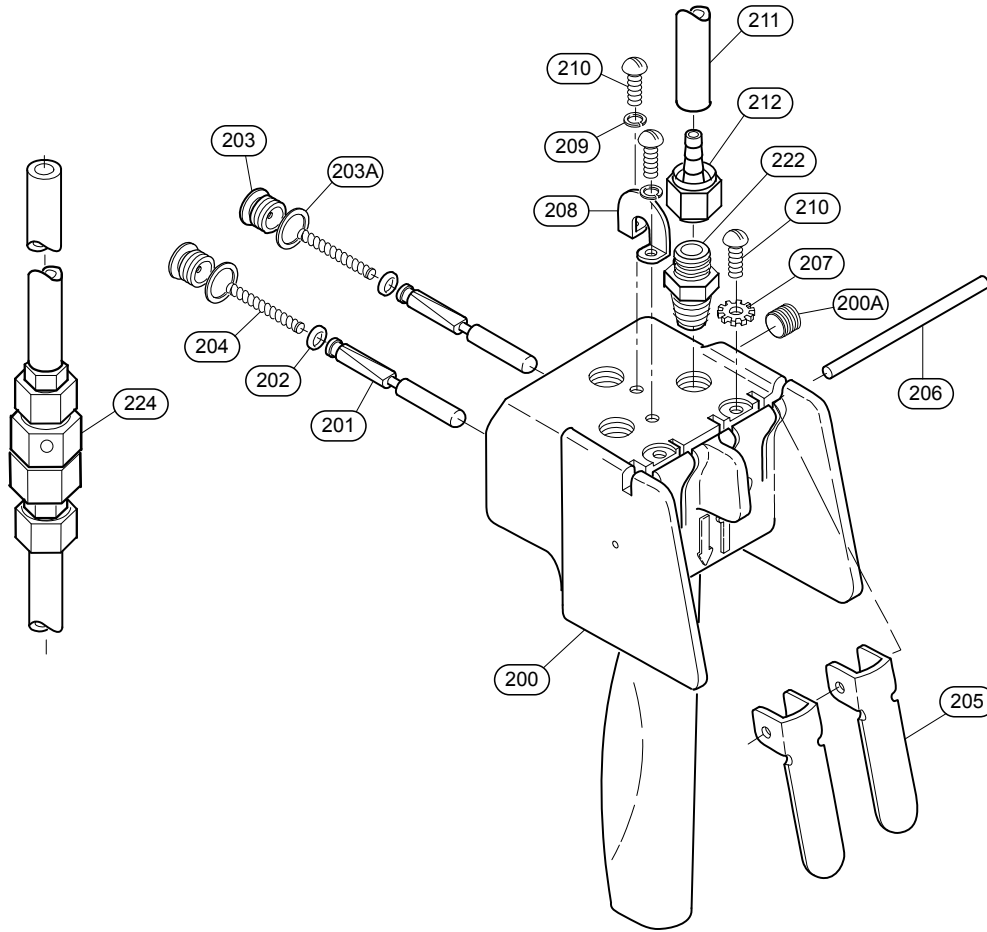


# HOIST SUB-ASSEMBLY DRAWING

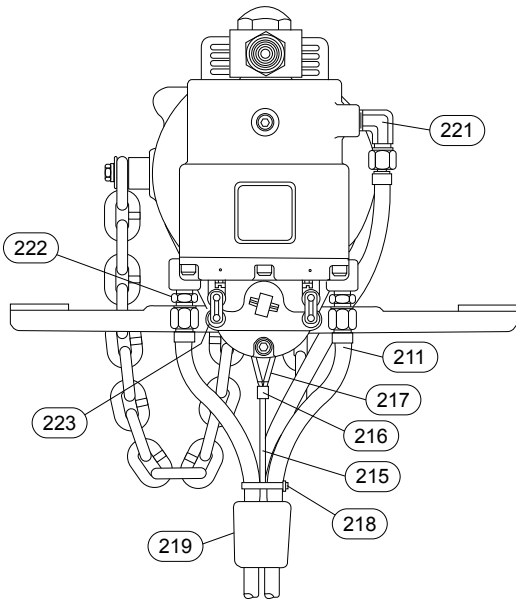


(Dwg. MHP3238)

# PENDANT AND HOSE ASSEMBLY DRAWING



(Dwg. MHP3241)



(Dwg. MHP3245)



(Dwg. 04612776)

## PENDANT AND HOSE ASSEMBLY PARTS LIST

Item No.	Description of Part	Total Qty	Part Number	Item No.	Description of Part	Total Qty	Part Number
200	Pendant Handle Assembly	1	MLK-K269C	212	Swivel Fitting	6	51029
200A	Plug	1	502-95	---	Strain Relief Assembly	1	MLK-LWR3A
201	Pendant Throttle Valve Assembly	2	MLK-K264B	215	Strain Relief Cable	#	33323-XXX-XX
• 202	Throttle Valve 'O' Ring	2	R000BR1C-283	216	Clamping Sleeve <b>(Note 1)</b>	2	32356
203	Pendant Throttle Valve Cap	2	MLK-K266A	217	Clamping Thimble	2	31477
203A	Pendant Throttle Valve Cap Gasket	1	MLK-504	218	Hose Tie <b>(Note 2)</b>	#	HRE20A-283
• 204	Pendant Throttle Valve Spring	1	MLK-51A	219	Warning Tag	1	04612776
205	Pendant Throttle Lever	2	MLK-273	*	Spark Resistant Tag	1	MLKR-33
206	Throttle Lever Pin	1	DLC-120A	*	Spark Resistant Tag Fastener	2	CE110-4
207	Pin Lockwasher	2	D02-138	• 221	Elbow 1/4" NPT to 7/16" - 20	1	UWD-161
208	Strain Relief Support	1	MLK-450	222	Adapter	5	MLK-165
209	Relief Support Lock Washer (Pack of 10 use 2)	1	H54U-352-10	223	Pendant Link	-	MLK-224
210	Handle Screw	4	HRE20A-68	224	Quick-Exhaust Valve <b>(Note 3)</b>	2	MLK-A939
211	Hose	#	50923				

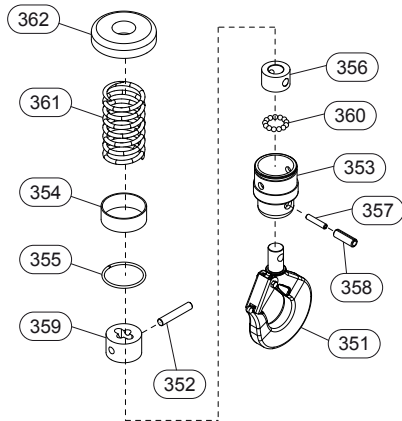
•	Recommended Spare
*	Not Shown
#	Specify length in feet

**Note 1:** A crimping tool [(Micropress Tool with Groove Size G or compatible crimping tool) is required to install the Clamping Sleeves (216).]

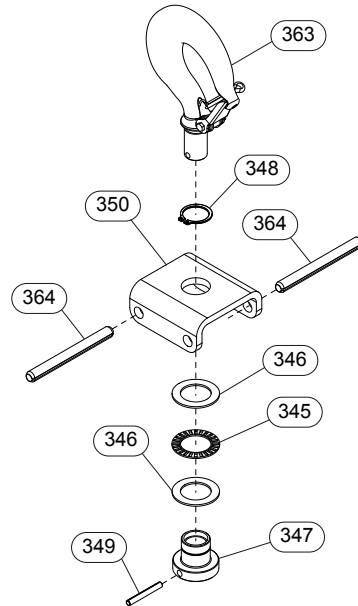
**Note 2:** Use 3 per 5 feet of Pendant hose length and 2 per each additional feet of hose.

**Note 3:** Refer to Form P6778 for parts information on Pendant Throttle Handle Assemblies for Two and Three motor functions.

## SINGLE LINE HOIST HOOK ASSEMBLY DRAWING AND PARTS LIST



(Dwg. MHP3247)



(Dwg. MHP3248)

Item No.	Description of Parts	Total Qty	Part Number	
			Standard (1/2t max)	
			ML250K, ML250KS, ML500K and ML500KS	
			Standard Steel	Bullard Burnham
<b>Bottom Block Assembly</b>			MLK-K378	MLK-KBB378
• 351	Hook Assembly (includes Latch Kit)	1	35006-ARO	35201
•	Latch Kit	1	35023	---
352	Pin	1	MLK-553	
353	Bucket	1	47114277	
354	Sleeve	1	35017	
355	Retaining Ring	1	35016	
• 356	Collar	1	35010	
357	Pin	1	Y178-77	
358	Pin	1	Y178-114	
359	Chain Connector	13	47114269	
• 360	Ball	1	Y16-6	
361	Spring	1	MLK-25	
362	Stop Ring	1	MLK-259	
<b>Top Hook Assembly</b>				
• 363	Hook Assembly ***	1	MLK-KS304	CE110-KBB377
---	Hook	1	CE110-KS304	CE120-BB377X
•	Latch Kit	1	35023	---
• 345	Bearing	1	R4810-105	
346	Thrust Washer	2	CE110-596	
347	Hook Nut (includes items 348 and 349)	1	---	CA105-R305A
• 348	Retainer	1	MR10-375 **	
349	Hook Pin	1	---	MLK-826
350	Hook Yoke	1	MR10-590B	
• 364	Pin	2	MR-964	
<b>Label for Bottom Hook Assembly</b>				
*	for 1/4 ton ML250K and ML250KS	2	48379929	
*	for 1/2 ton ML500K and ML500KS	2	48379937	

•	Recommended Spare
*	Not Shown

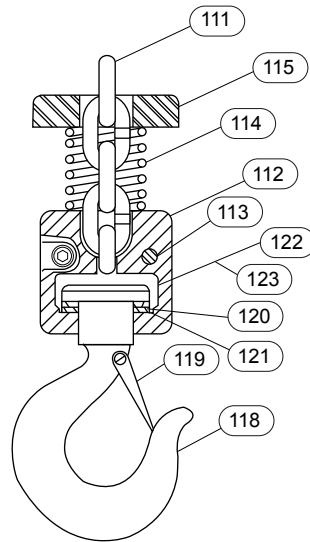
\*\* Also used on the bottom block assembly on hoist versions prior to 02/2010.

\*\*\* Includes Items 345-349

**Note:** for ML250K and ML500K: Stop Ring (362) and Spring (361) are required to prevent damage to the Hoist.

For models ML250KS, ML250KR and ML500KS: Stop Ring (362) and Spring (361), are not necessary for these units due to reduced operating speeds. This will decrease the minimum hook to beam distance in full UP position by approximately 4 in. (100 mm).

## SINGLE LINE HOIST HOOK ASSEMBLY DRAWING AND PARTS LIST (SPARK RESISTANT)



(Dwg. MHP3252)

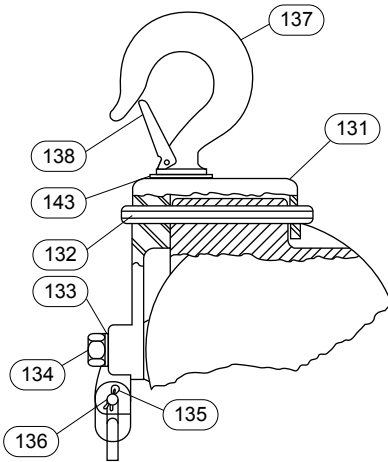
Item No.	Description of Parts	Total Qty	SPARK RESISTANT (1/4 t max)
			MLK250KR
<b>Bottom Hook and Block Assembly</b>			
*	Hook Assembly	1	MLK-KR463
112	Hook Block	1	CA-SR304N (Bronze)
113	Bolt	2	MLK-R463 (Stainless)
114	Spring	2	MLK-461
115	Stop Ring	1	MLK-R259 (Aluminum)
*	Hook Assembly	1	MLK-KR463
*	Hook Assembly	1	CA-SR304N (Bronze)
116	Hook Yoke	1	MR10-590B
• 117	Pin	2	MR-964
<b>Bottom Hook Assembly</b>			<b>Bronze (1/4 t max)</b>
*	Hook Assembly (includes items 118 and 119)	1	CA-SR304N
118	Hook	1	CA-R304N
• 119	Latch kit	1	D01-54055N
• 120	Bearing	1	R4810-105
• 121	Thrust Washer	2	CE110-596
122	Hook Nut (includes items 123 and 124)	1	CA105-R305A
• 123	Nut Pin	1	MLK-826
• 124	Retainer (Top Hook Only)	1	MR10-375
*	Label for 1/4 ton ML250KR	2	48379952

•	Recommended Spare
*	Not Shown

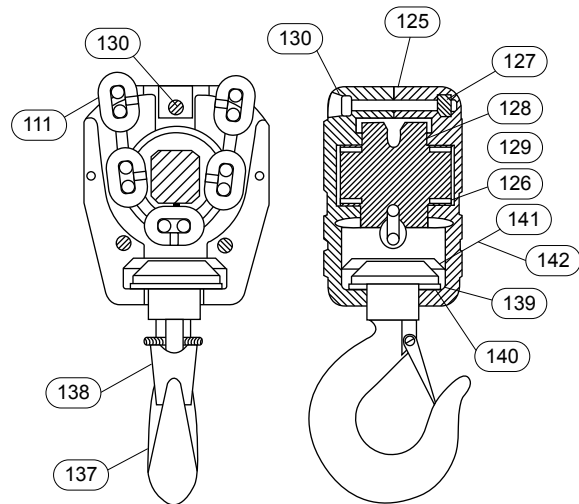
**Note:** For ML250K and ML500K: Stop Ring (115) and Spring (114) are required to prevent damage to the Hoist.  
For models ML250KS, ML250KR and ML500KS: Stop Ring (115) and Spring (114), are not necessary for these units due to reduced operating speeds. This will decrease the minimum hook to beam distance in full UP position by approximately 4 in. (100 mm).

**Note 2:** Refer to Dwg. MHP3248 on page 12 and Parts List for top hook.

## DOUBLE LINE HOIST HOOK ASSEMBLY DRAWING AND PARTS LIST



(Dwg. MHP3253)



(Dwg. MHP3254)

Item No.	Description of Parts	Total Qty	Part Number		
			Standard (1 t max)	Spark Resistant (1/2 t max)	Bullard
			ML1000K and ML1000KS	ML500KR	ML1000K and ML1000KS
<b>Bottom Hook Assembly</b>		1	ML100K-A378	CA110-AR378	ML1000K-KBB378
*	Hook Assembly	1	ML1000K-KS377	ML500KR-K377 (Bronze)	CE120-KBB377
125	Hook Block	2	CE120-B378 (Aluminum)	CA110-BR378 (Aluminum)	CE120-B378 (Aluminum)
*	Nameplate	2	---	CA110SR-99	---
*	Drive Screw (Pack of 12)	8	R4K-302-12		
• 126	Bearing	2	0C9-593		
127	Thread Inserts	3	CE120-38		
128	Thrust Washer	2	CE120-80		
129	Pocket Wheel	1	CE120-380		
130	Bolt	3	CE120-312		
*	Top Hook Assembly	1	ML1000K-K590A	ML500KR-K590A	ML1000K-KB8590A
*	Hook Assembly	1	ML1000K-KS377	ML500KR-K377 (Bronze)	CE120-KBB377
131	Hook Yoke	1	ML1000K-590A		
132	Pin	2	ML1000K-964		
133	Lockwasher	2	UW50A30-58		
134	Bolt	2	119A2A202		
• 135	Cotter Pin	2	D02-524		
• 136	Pin	1	ML20-962A		
<b>Top or Bottom Hook Assembly</b>			<b>Standard Steel(1t max)</b>	<b>Bronze (1t max)</b>	<b>Bullard Burnham (1t max)</b>
*	Hook Assembly	1	ML1000K-KS377	ML500KR-K377	CE120-KBB377
137	Hook (Includes item 138)	1	HRA20A-S377	CA-SR304N	CE120-BB377X
• 138	Latch Kit	1	D01-S123	D01-S4055N	---
• 139	Bearing	1	CE110-295		
• 140	Thrust Washer	2	CE120-596		
141	Hook Nut	1		CA110-R305	CE120-BB377Y
• 142	Hook Nut Pin	1	---	MLK-826	
• 143	Retainer Ring (Top Hook Only)	1	HRA20A-375	---	---

•	Recommended Spare
*	Not Shown

**Note:**

1. Bolt (134) to be tightened at 32.5 - 40.7 Nm (24-30 ft lb)
2. Bolt (130) to be tightened at 22.6 - 26.0 Nm (16.7-19.2 ft lb)

## TROLLEY ASSEMBLY PARTS LIST

**Note: The components listed here are the major assemblies required for MLK trolleys. For individual Trolley components, and for trolley maintenance requirements, see the form MHD56083, "Parts, Operation, and Maintenance Manual for Plain, Hand Chain, and Air-Powered Trolley Models TIR6600, TIR132, and RT010".**

Description of Parts	Total Qty	Part Number
<b>Hoist with manual 'A' flange trolleys ( hoist models containing 'DA' sequence, ex. hoist models MLXXXXX-XXDAXX-XXXX)</b>		
<b>ML250K/ML250KS and ML500K/ML500KS</b>		
Trolley	1	RT010A
Lug Adapter kit	1	MLK-K425
<b>For ML250KR Models</b>		
Trolley	1	RT010ASB
Lug Adapter kit	1	MLK-K425
<b>For ML500KR Models</b>		
Trolley	1	RT010ASB
Lug Adapter kit	1	ML1000K-K425A
<b>For ML1000K/ML1000KS</b>		
Trolley	1	RT010A
Lug Adapter kit	1	ML1000K-K425A
<b>Hoist with manual 'D' flange trolleys (hoist models containing 'DD' sequence, ex. hoist models MLXXXXX-XXDDXX-XXXX)</b>		
<b>For ML250K/ML250KS/ML500K/ML500KS/ML1000K/ML1000KS</b>		
Trolley	1	TIR6600-AP
Lug Adapter Kit	1	MLK-K444TIR
Trolley Wheels	4	TR-A431U
Trolley Bolt Kit	1	TR-KFLGD
<b>For ML250KR/ML500KR</b>		
Trolley	1	TIR6600-AP
Lug Adapter Kit	1	MLK-K444TIR
Trolley Wheels	4	TR-A1431U
Trolley Bolt Kit	1	TR-KFLGA
<b>Hoist with 'hand chain', 'A' flange, trolleys (hoist models containing 'FxxA' sequence, ex. Hoist models MLXXXXX-XXFxxAXX-XXXX) where 'xx' specifies the drop, in feet, of the hand chain</b>		
<b>For ML250K/ML250KS/ML500K/ML500KS/ML1000K/ML1000KS</b>		
Trolley	1	TIR6600-AP
Lug Adapter Kit	1	MLK-K444TIR
Geared Trolley Wheels	4	TIR6600S-G-AP
Trolley Bolt Kit	1	TR-KFLGA
Hand Chain (specify drop, ft)	xx	D02-B476
<b>For ML250KR/ML500KR</b>		
Trolley	1	TIR6600-AP
Lug Adapter Kit	1	MLK-K444TIR
Geared Trolley Wheels	4	TIR6600B-G-AP
Trolley Bolt Kit	1	TR-KFLGA
Hand Chain (specify drop, ft)	xx	D02-B476
<b>Hoist with 'hand chain', 'D' flange, trolleys (hoist models containing 'FxxD' sequence, ex. Hoist models MLXXXXX-XXFxxDXX-XXXX) where 'xx' specifies the drop, in feet, of the hand chain</b>		
<b>For ML250K/ML250KS/ML500K/ML500KS/ML1000K/ML1000KS</b>		
Trolley	1	TIR6600-AP
Lug Adapter Kit	1	MLK-K444TIR
Geared Trolley Wheels	4	TIR6600S-G-AP
Trolley Bolt Kit	1	TR-KFLGD
Hand Chain (specify drop, ft)	xx	D02-B476
<b>For ML250KR/ML500KR</b>		
Trolley	1	TIR6600-AP
Lug Adapter Kit	1	MLK-K444TIR
Geared Trolley Wheels	4	TIR6600B-G-AP
Trolley Bolt Kit	1	TR-KFLGD
Hand Chain (specify drop, ft)	xx	D02-B476
<b>Hoist with powered, 'A' flange, trolleys (hoist models containing 'HA' sequence, ex. Hoist models MLXXXXX-XXHAXX-XXXX)</b>		
<b>For ML250K/ML250KS/ML500K/ML500KS/ML1000K/ML1000KS</b>		
Trolley	1	TIR6600-AP
Lug Adapter Kit	1	MLK-K444TIR
Motorized Trolley Wheels	4	TIR6600S-G-AP
Trolley Bolt Kit	1	TR-KFLGD
Hand Chain (specify drop, ft)	xx	D02-B476

## TROLLEY ASSEMBLY PARTS LIST CONTINUED

<b>For ML250KR/ML500KR</b>		
Trolley	1	TIR6600-AP
Lug Adapter Kit	1	MLK-K444TIR
Motorized Trolley Wheels	4	TIR6600B-G-AP
Trolley Bolt Kit	1	TR-KFLGD
Hand Chain (specify drop, ft)	xx	D02-B476
<b>Hoist with powered, 'D' flange, trolleys (hoist models containing 'HD' sequence, ex. Hoist models MLXXXXXX-XXHDXX-XXXX)</b>		
Trolley	1	TIR6600-AP
Lug Adapter Kit	1	MLK-K444TIR
Motorized Trolley Wheels	4	TIR6600B-0-AP
Trolley Bolt Kit	1	TR-KFLGA
<b>For ML250K/ML250KS/ML500K/ML500KS/ML1000K/ML1000KS</b>		
Trolley	1	TIR6600-AP
Lug Adapter Kit	1	MLK-K444TIR
Motorized Trolley Wheels	4	TIR6600S-0-AP
Trolley Bolt Kit	1	TR-KFLGD
<b>For ML250KR/ML500KR</b>		
Trolley	1	TIR6600-AP
Lug Adapter Kit	1	MLK-K444TIR
Motorized Trolley Wheels	4	TIR6600B-0-AP
Trolley Bolt Kit	1	TR-KFLGD

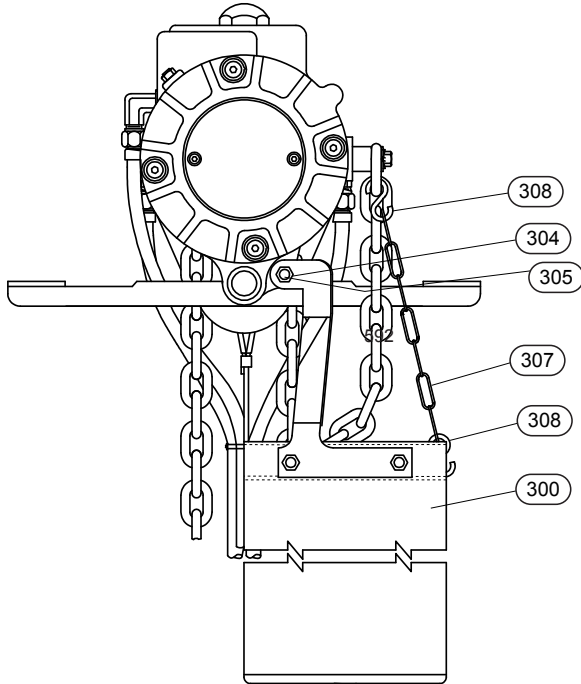


# INSTALLATION INSTRUCTIONS FOR FABRIC CONTAINER KITS

Refer to Dwg. MHP3236 and Dwg. MHP3237 on page 17.

## ⚠ WARNING

- Disconnect the hoist from the air supply before installing a chain container kit.



(Dwg. MHP3236)

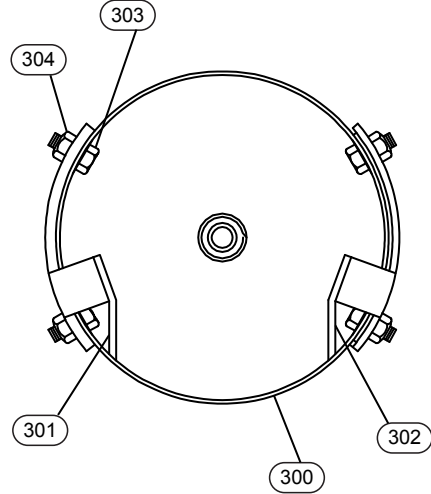
## NOTICE

1. Insert a container bolt (305) through the boss on the hoist housing and into the brackets (301 and 302). Retain the container with the bracket bolt nuts (304).

- If the container is to be allowed to swing outward, tighten the nuts to within one turn of being fully tight. This will allow the container to swing away from a load.

2. Apply the balance chain (307) to the container and hoist using the S-Hooks (308). Adjust the length of the chain to prevent the load chain from rubbing on the container.

### Top View of Chain Container



(Dwg. MHP3237)

Item No.	Description of Part	Total Qty	Part Number
<b>Fabric Chain Container Kit</b>			
---	for ML250K or ML500K Hoists with up to 17 ft lift or ML1000K Hoists with up to 9 ft lift	1	ML50K-K749-17
---	for ML250K or ML500K Hoists with up to 45 ft lift or ML1000K Hoists with up to 23 ft lift	1	ML50K-K749-45
300	Fabric Chain Container		
	for ML50K-K749-17	1	ML50K-749-17
	for ML50K-K749-45		ML50K-749-45
301	Left Bracket	1	ML50K-748
302	Right Bracket	1	ML50K-747
303	Bracket Bolt	4	R2N-103
304	Bracket Bolt Nut	6	ML50K-394
305	Chain Container Bolt	2	5080-638-4
306	Balance Chain	1	CA110-240-1/2
307	S-Hook	2	D02-421
<b>Metal Chain Container Kits</b>			
---	for ML250K or ML500K Hoists with up to 13 ft or ML1000K Hoists with up to 6.5 ft lift	1	ML10-K749
---	for ML250K or ML500K Hoists with up to 26 ft lift or ML1000K Hoists with up to 13 ft lift		ML20-K749A
---	for ML250K or ML500K Hoists with up to 40 ft lift or ML1000K Hoists with up to 20 ft lift		ML20K-749-20
---	for ML250K or ML500K Hoists with up to 80 ft lift or ML1000K Hoists with up to 40 ft lift		MLK-K750-80
300	Metal Chain Container		---
	for ML20-K749A (26 foot chain capacity)	1	Order Kit ML20-K749A
	for ML20-K749-20 (40 foot chain capacity)		Order Kit ML20-K749-20
	for MLK-K750-80 (80 foot chain capacity)		Order Kit MLK-K750-80
*	Screw	2	M0V010AA-634
*	Nut	2	MR-37

*	Not Shown
---	-----------

## ACCESSORIES

FRL Kit Part Number	Filter Part Number		Regulator Part Number	Lubricator Part Number		Size NPTF
	Polycarbonate Bowl	Metal Bowl		Polycarbonate Bowl	Metal Bowl	
C38341-810	F35341-400	F35341-410	R37341-600	L36341-100	L36341-110	1/2"
C38451-810	---	F35451-410	R37451-600	---	L36451-110	3/4"
C38461-810	---	F35461-410	R37461-600	---	L36461-110	1"

**Note:** Metal bowls include sight gauges. Polycarbonate bowls include a metal bowl guard.

## REPAIR AND CONVERSION KITS

Recommended Spare Part Kit: MHLK-HSK includes all recommended spare parts for MLK hoists.

**Fabric Chain Container:**

Includes chain container, brackets and all hardware necessary for installation on a hoist.  
 No. ML50K-K749-17 (03551066) for use on a single line hoist with up to a 17 ft (5 m) lift and on a double line hoist with up to a 9 ft (2.7 m) lift.  
 No. ML50K-K749-45 (03551074) for use on a single line hoist with up to a 45 ft (14 m) lift and on a double line hoist with up to a 23 ft (7 m) lift.

**Metal Chain Containers:**

No. ML10-K749 for use on a single line hoist with up to 13 ft (4 m) lift and on a double line hoist with up to 6.5 ft (2 m) lift.  
 No. ML20-K749A for use on a single line hoist with up to 26 ft (8 m) lift and on a double line hoist with up to 13 ft (4 m) lift.  
 No. ML20-K749-20 for use on a single line hoist with up to 40 ft (12 m) lift and on a double line hoist with up to 20 ft (6 m) lift.  
 No. MLK-K750-80 for use on a single line hoist with up to 80 ft (24 m) lift and on a double line hoist with up to 40 ft (12 m) lift.

**Pendant Conversion Kit:**

Includes all components including hose and strain relief cable necessary to convert a pull chain throttle hoist to pendant control operation.  
 Length of pendant hose must be specified when ordering. No. MLK-AL269C-XX for use on all MLK hoists. Pendant length is normally 5 ft (1.5 m) shorter than lift.

**Pull Chain Conversion Kit:**

Includes all components necessary, except the pull chains, to convert a pendant throttle hoist to pull chain control operation.  
 No. MLK-K415A for use on all MLK hoists. Order pull chains separately.  
 No. 37657-XXX-X (04081154) pull chain for use on standard MLK hoists. Specify total length of two required pull chains.  
 No. D02-1413 (03170685) pull chain for use on spark resistant MLK hoists. Specify total length of two required pull chains.

**Valve Chest Conversion Kit:** Includes all components necessary to convert Valve Chests used on Hoists with second letter of the Serial Number A through G or with second and third letters of the Serial Number HA, HB or HC to the same style Valve Chest used on Hoists with second letter of the Serial Number other than A through G or with second and third letters of the Serial Number other than HA, HB or HC. No. MLK-K545B (03835519)

**Manual Brake Release Kit:**

Includes all the components for a manual release brake and/or 200% brake capability. No. MLK-K390 (03721685) for use on all MLK Hoists.

**For All MLK Hoists:**

Pendant No. MLK-K122B (04306551) Strain-relief chain CA110-B240 (03457769) Specify feet of lift.  
 Motor hose (2 required) 50923 (03990215) Specify feet of lift.  
 Hoist hose (3 required) BH6C (04306510) Specify feet of lift.  
 (For lift length greater than 20 ft, 2 pieces each of hose quick exhausts 20417(71069579) and MR-939 (03195484) are required).  
 (Double quantity for lift length greater than 50 ft)

**Three-Motor Pendant :**

**For All MLK Hoists:**  
 Pendant No. MLK-K1312B (04306544) Strain-relief chain CA110-B240 (03457769) Specify feet of lift.  
 Motor hose (2 required) 50923 (03990215) Specify feet of lift.  
 Hoist hose (3 required) BH6C (04306510) Specify feet of lift.  
 (For lift length greater than 20 ft, 2 pieces each of hose quick exhausts 20417(71069579) and MR-939 (03195484) are required).  
 (Double quantity for lift length greater than 50 ft)

**Quick-Exhaust Valves:**

Must be used on all Hoists with pendant control when hoses exceed 50 ft. (15 m) in length and includes all fittings and clamps. No. MLK-A939 (03619681) for all MLK Hoists.

**Overhaul Gasket Kit:**

Includes gaskets, O-rings and seals for ML250K, ML250KR, ML500K, ML500K, and ML1000K hoists.  
 No. MLK-K445 (03713740)

**Bullard-Burnham Gate Hooks:**

No. CE110-KBB377 (03504537) for ML250K and ML500K.  
 No. CE120-KBB377 (03504545) for ML1000K.

**Vane and Spring Retrofit Kit:**

This kit will improve starting and low speed control on hoists not currently so equipped with, No. MLK-KVSR1 (03835451) Retrofit Kit includes illustrated parts 17, 31, 65, 93, and MLK-42 (7), MLK-43 (7), and HLK-640.

**Vane/spring Kit:**

No. MLK-K4243-7 Kit includes illustrated parts 69 (7) and 69A (7).

**Vane Spring Packet:**

No. MLK-43-7 Kit includes illustrated part 69A (7).

**Down Valve Assembly:**

No. MLK-K1102D Assembly includes illustrated part 17.

**Valve Chest Repair Kit:**

No. MLK-VCK1 Kit includes illustrated parts 18, 19 (2), 21 (4), 22 (2), 24 (2), 25 (2), 27 (2), 29 (2), 30 (2), 31 (2), 33 (2), 40 (2), 41, 42, 43 and 223.

**Brake Kit:**

No. MLK-ABK1 Kit includes illustrated parts 95 (2), 97 (3), 100, and 101.

**Chain Wheel Kit:**

No. MLK-CWK1 Kit includes illustrated parts 76, 77, 78, 79, 80, and non-illustrated part ML-741C.

DECALS FOR MLK SERIES HOISTS

**1/4 t**  
**250 kg**

(A) 48379853 (for 1/4 ton ML250K and ML250KS Models)



(F) 48379945 (for 1/4 ton ML250K and ML250KS Models With Old Style Bottom Hook Assembly)

**1/4 t**  
**250 kg**  
**SPARK RESISTANT**

(B) 48379861 (for 1/4 ton ML250KR Model)



(G) 48379952 (for 1/4 ton ML250KR Model)

**1/2 t**  
**500 kg**

(C) 48379879 (for 1/2 ton ML500K and ML500KS Models)



(H) 48379960 (for 1/2 ton ML500K and ML500KS Models With Old Style Bottom Hook Assembly)

**1/2 t**  
**500 kg**  
**SPARK RESISTANT**

(D) 48379895 (for 1/2 ton ML500KR Model)



(J) 48379937 (for 1/2 ton ML500K and ML500KS Models)

**1 t**  
**1000 kg**

(E) 48379903 (for 1 ton ML1000K and ML1000KS Models)



(K) 48379929 (for 1/4 ton ML250K and ML250KS Models)

(Dwg. MHP3246)

