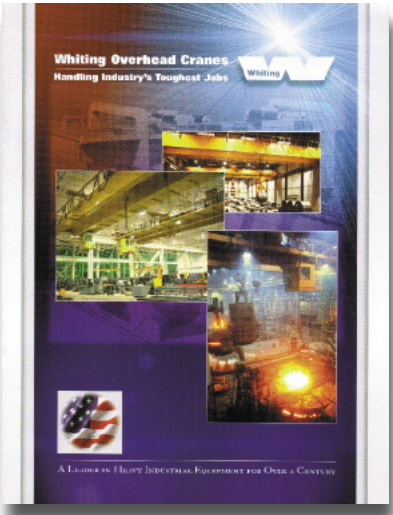


Whiting Corporation Whiting Overhead Cranes



Whiting Overhead Cranes

HANDLING INDUSTRY'S TOUGHEST JOBS



Whiting's Facility is on a 23 acre site, with 197,000 square feet of office and manufacturing area under roof.

IN 1884...

WHEN NORTH AMERICA WAS JUST BEGINNING TO FLEX ITS MANUFACTURING AND ECONOMIC MUSCLES, J.H. WHITING FOUNDED THE DETROIT FOUNDRY EQUIPMENT COMPANY.

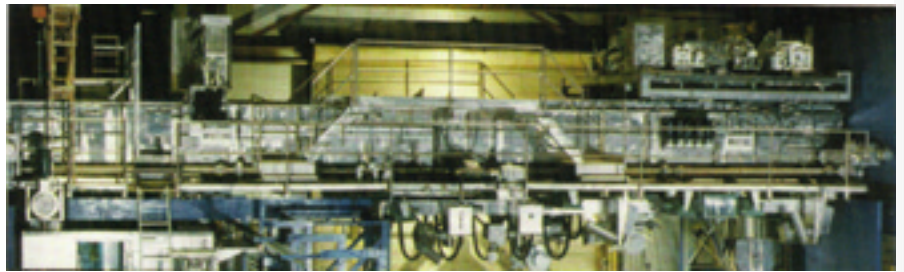
LOCATED IN DETROIT, MICHIGAN, THE COMPANY WAS DEDICATED TO PROVIDING THE FOUNDRY INDUSTRY WITH HIGH QUALITY METALLURGICAL AND MATERIAL HANDLING EQUIPMENT. IN 1898, AFTER MOVING THE YOUNG COMPANY TO HARVEY, ILLINOIS, MR.

WHITING DESIGNED AND BUILT THE FIRST THREE MOTOR OVERHEAD BRIDGE CRANE AND THE RENAMED WHITING FOUNDRY EQUIPMENT COMPANY SOON BECAME A LEADER IN DESIGN AND MANUFACTURE OF OVERHEAD CRANES AND MATERIAL HANDLING EQUIPMENT.

TODAY...

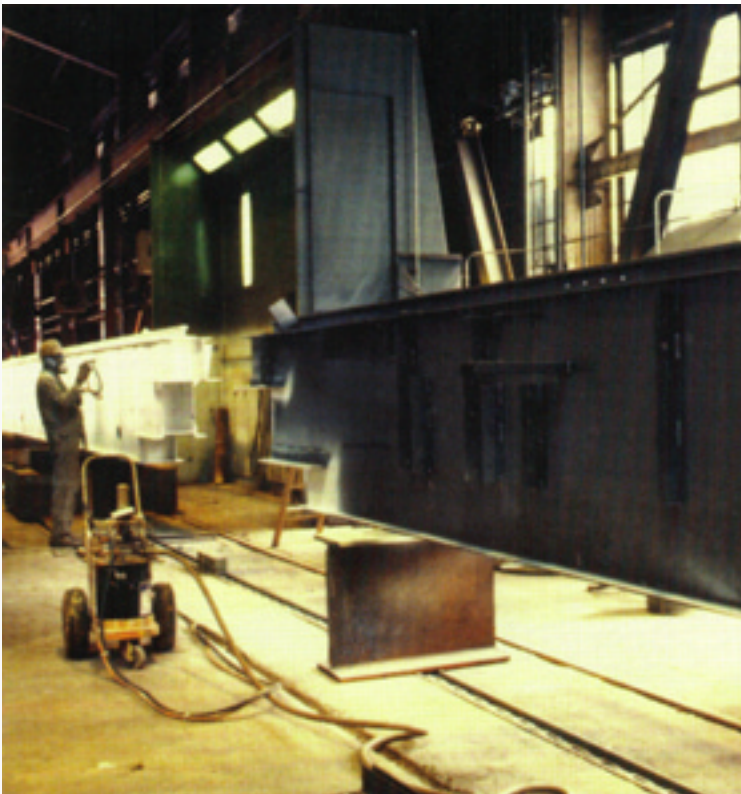
WHITING HAS GONE THROUGH MANY CHANGES, BUT OUR COMMITMENT TO PROVIDING RELIABLE SERVICE AND A QUALITY PRODUCT ALWAYS REMAIN. WHITING IS FOUNDED MEMBER OF THE CRANE MANUFACTURER'S ASSOCIATION OF AMERICA, INC., A TRADE ASSOCIATION OF MANUFACTURERS OF ELECTRIC OVERHEAD TRAVELING CRANES. WHITING ACTIVELY PARTICIPATES IN THE ASSOCIATION ACTIVITIES WHICH INCLUDE THE OPERATION OF A STRONG ENGINEERING COMMITTEE WHICH CONSTANTLY STRIVES TO IMPROVE CRANE ENGINEERING PRACTICES.







One of the assembly floors where Whiting cranes from 5 to 800 ton capacity receive final assembly and testing.



Painting bay equipped with enclosed booths, allow for extremely accurate quality control. Applying special coatings for use in nuclear crane applications is an example of the capabilities of this facility.



We have the engineering expertise, production skills and application experience to manufacture quality cranes.

OUR MANUFACTURING TECHNIQUES AND EQUIPMENT HAVE EVOLVED TO THE POINT THAT TODAY, WHITING CAN PROVIDE ITS CUSTOMERS WITH THE HIGHEST QUALITY CRANES PRODUCED TO THE MOST EXACTING INDUSTRY STANDARDS.

OUR FACILITIES INCLUDE THE LATEST EQUIPMENT FOR THE PRODUCTION OF OVERHEAD CRANES. INCLUDED ARE STRUCTURAL FABRICATION CAPABILITIES, WELL EQUIPPED WELD SHOP, CNC MACHINING EQUIPMENT, CLEANING AND PAINTING FACILITIES, AND NUMEROUS ASSEMBLY AREAS.

WHITING CONTINUES TO PRODUCE STANDARD INDUSTRIAL CRANES AND CUSTOM ENGINEERED CRANES FOR APPLICATIONS AS WIDE RANGING AS POWER UTILITY PLANTS TO PAPER MILLS, STEEL HANDLING TO RADIOACTIVE WASTE HANDLING, REFUSE HANDLING TO HOT METAL. WHATEVER THE MATERIAL HANDLING NEED, WHITING HAS THE CAPABILITIES AND THE EXPERTISE TO DO THE JOB.



Direct Consultation at the earliest phases of the design process ensures success.



Whiting's continuous employee training programs are part of our company-wide policy to offer our customers superior service



Every step that goes into the engineering, designing and estimating has been subjected to review with an emphasis on quality control.



At Whiting Cranes Begin With Customers

WHITING CRANES BEGIN WITH CUSTOMERS, OR MORE PRECISELY THE CUSTOMERS' NEEDS. THROUGH MEETINGS WITH THE CUSTOMER, WHITING ENGINEERS MAKE AN EXACT DETERMINATION AS TO THE CUSTOMERS PARTICULAR MATERIAL HANDLING PROBLEMS AND THE SOLUTIONS WHITING CAN PROVIDE. AFTER BOTH THE CUSTOMER AND WHITING HAVE A THOROUGH UNDERSTANDING OF THE APPLICATION, A TEAM OF WHITING ENGINEERS GOES TO WORK ON THE PROJECT.

THE USE OF COMPUTERS AT WHITING HAS EXPANDED BEYOND COMPUTER-AIDED DESIGN AND ANALYSIS TO ASSIST PERSONNEL IN CUSTOMER SERVICE, ENGINEERING AND THE PRODUCTION SYSTEM. OUR CAD SYSTEM IS PC BASED USING AUTOCAD ON A WINDOWS NT PLATFORM. ASSISTING IN INVENTORY MANAGEMENT INCLUDES THE HEWLETT PACKARD HP9000 COMPUTER HARDWARE SYSTEM. WHITING'S RESEARCH AND DEVELOPMENT DEPARTMENT ACCOMPLISHES COMPLICATED TASKS USING PRO ENGINEERING SOFTWARE.



**This 15 ton crane is used for moving steel
In the storage yard of a major rail car manufacturer.**



**A Whiting 400/50 ton crane used for manufacturing
Power plant turbines.**



Whiting Custom Built Cranes

*“When there is a
requirement for
precise movement
of heavy loads,
Whiting cranes
are the answer.”*

EVERY ONE OF THE
WHITING CRANES
PICTURED HERE WAS CUSTOM
DESIGNED TO DO
ITS SPECIFIC JOB WITH
OPTIMUM EFFICIENCY.



20 ton crane moving material in a steel service center.



This 25 ton cab operated crane efficiently handles long loads.



22 ton crane with a 9 ton auxiliary hoist, at work in an automotive stamping facility.



Twin, 30 ton, single trolley cranes smoothly perform coil handling tasks.



Versatile, cab controlled crane does a variety of steel warehouse handling jobs in a major mid-west steel service center.



Whiting Steel Service Center Cranes

STEEL SERVICE CENTERS
HAVE LONG KNOWN THE BENEFITS OF
USING WHITING CRANES.
WHITING HAS A HISTORY OF PROVIDING
DEPENDABLE CRANES OF THE HIGHEST
QUALITY TO MEET THE UNIQUE
NEEDS OF THE INDUSTRY.

WHITING IS EQUIPPED TO HANDLE
THE REQUIREMENTS OF ALL
STEEL SERVICE CENTERS WHILE
HELPING TO KEEP MATERIAL
HANDLING COSTS DOWN.

STEEL SERVICE CENTERS
THROUGHOUT THE UNITED STATES
HAVE COME TO KNOW AND TRUST
WHITING EQUIPMENT FOR
THEIR OVERHEAD CRANE NEEDS.



30/10 ton, center mounted cab crane working in a complete Whiting designed and fabricated equipment melt shop of a major farm equipment manufacturer.



A Whiting 150/50 ton charging and hot metal handling crane services a 15'-0" diameter Whiting Hydro-Arc® Furnace.



Whiting Foundry & Hot Metal Handling Cranes

WHITING CORPORATION
HAS BEEN A LEADER
IN SUPPLYING CRANES
TO THE FOUNDRY AND
MINI-MILL INDUSTRIES FOR
ALMOST A CENTURY.

THESE INCLUDE
HOT METAL HANDLING,
SCRAP HANDLING,
FURNACE CHARGING,
INGOT HANDLING,
RE-BAR MILL,
INGOT STRIPPING,
BILLET YARD STORAGE,
SHIPPING ROOM AND
NUMEROUS OTHER TYPES
OF CRANES
USED IN THIS INDUSTRY.



Radio controlled 460 ton polar gantry crane for reactor containment service.



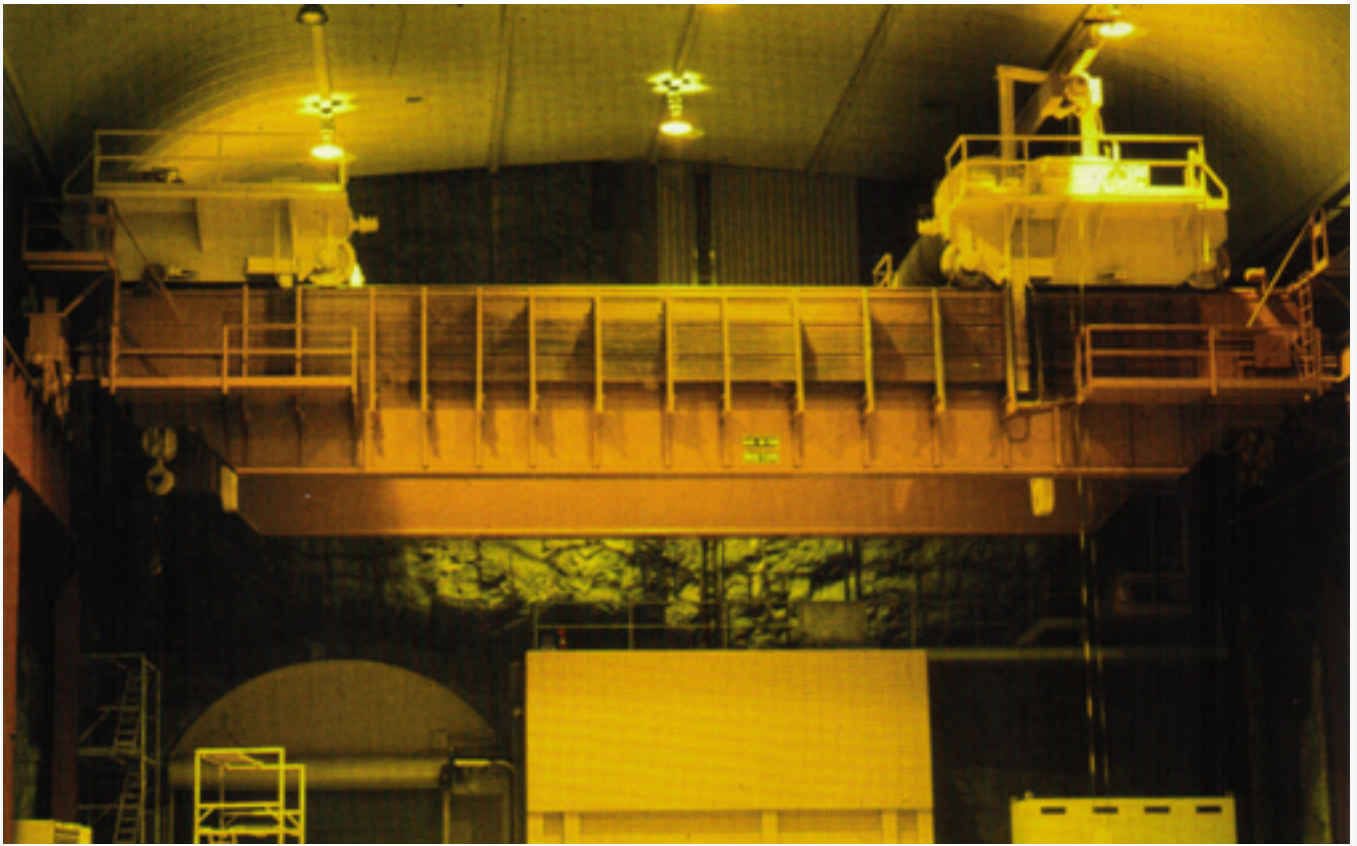
This 317 ton gantry crane performs material handling tasks at a pumped storage power generation station.



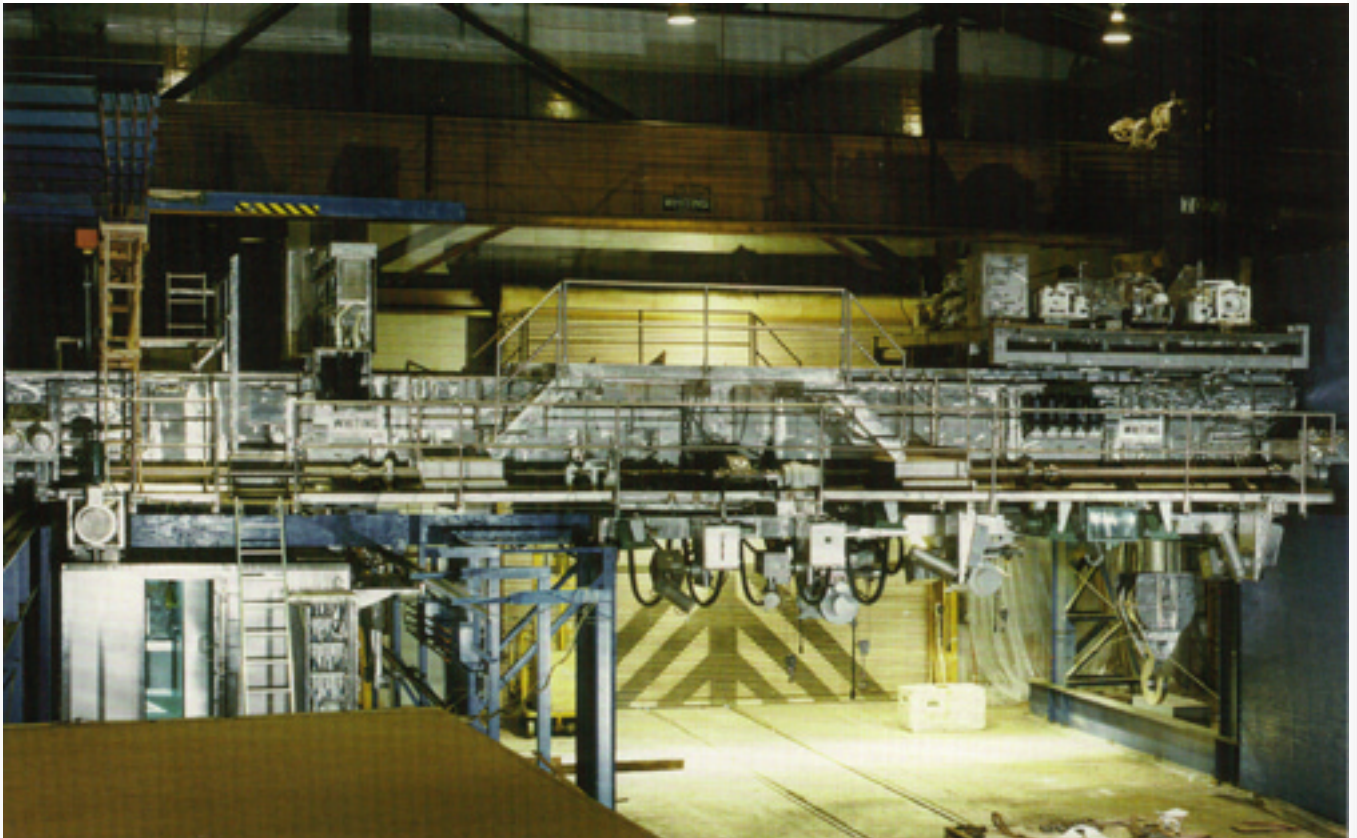
Whiting Utility Cranes

WHITING OVERHEAD AND GANTRY CRANES ARE WIDELY USED BY UTILITIES IN POWER GENERATING HYDROELECTRIC, FOSSIL FUEL, AND NUCLEAR PLANTS. ALTHOUGH THE BASIC DESIGN OF UTILITY CRANES IS ESSENTIALLY THE SAME AS WHITING INDUSTRIAL CRANES, UTILITY CRANES DIFFER SOMEWHAT IN CERTAIN PERFORMANCE REQUIREMENTS. FOR INSTANCE, THE ABILITY TO BE PLACED IN SERVICE AFTER AN EXTENDED STANDBY PERIOD. SPECIAL CONSIDERATION IS ALSO REQUIRED FOR CRANES IN NUCLEAR PLANTS BECAUSE OF THE NATURE OF THE LOADS THEY MUST HANDLE.

THE ULTIMATE GOAL OF WHITING UTILITY CRANES IS THE SAME AS FOR THOSE USED IN OTHER INDUSTRIES: TO PROVIDE OUR CUSTOMERS WITH THE MOST EFFICIENT, DEPENDABLE AND COST-EFFECTIVE MEANS FOR LIFTING, TRANSPORTING AND LOWERING WHATEVER TYPE OF LOAD THEY ARE REQUIRED TO MOVE.



Double trolley, 600 ton crane performs 700 feet below the earth's surface in special nuclear operation.



50 ton stainless steel crane for special nuclear material processing.



IF YOU HAVE A MATERIAL HANDLING PROBLEM, LET WHITING'S TIME TESTED INNOVATIONS GO TO WORK FOR YOU.

WHITING HAS BUILT CRANES FOR EVERY KIND OF SERVICE AND FOR VIRTUALLY ANY SIZE PLANT. EACH CRANE WAS SPECIALLY ENGINEERED FOR ITS INDIVIDUAL JOB, WITH FEATURES THAT ASSURE LONG LIFE AND LOW MAINTENANCE.

IF YOU'RE THINKING OF A NEW CRANE FOR ANY INDUSTRIAL OR UTILITY APPLICATION, CONSULT YOUR WHITING REPRESENTATIVE.



Whiting Corporation
26000 Whiting Way
Monee, Illinois 60449
Info@whitingcorp.com
www.whitingcorp.com
