

M55 ELECTRIC HOIST

Space-saving wire rope hoist expands overhead work space.

● **Create additional overhead lifting work space.**

As little as 16" of beam-to-hook clearance (headroom) is required.

- Maximize usable work space under bridge, jib and gantry cranes.
- Increase load clearance over obstacles.

● **Position loads accurately and efficiently.**

Single and two-speed lifts available from 12 to 50 feet per minute.

- Carefully position molds and tooling on production equipment.
- Accurately load rolls, coils and bulk bags onto processing machinery.
- Quickly raise replacement pumps and motors to service platforms.

● **Lift loads to bench level or high overhead.**

Standard lift heights from 20 to 100 feet.

- Service and install hard-to-reach equipment from elevated platforms and roof tops.
- Incorporate shorter lift hoists for repetitive work station lifting applications.
- Raise raw materials, products and equipment from pits and access shafts.

● **Configure the M55 for specific applications.**

Standard and custom options are available.

- Equip the M55 for outdoor use and for operation in hazardous environments.
- Meet critical application requirements with custom engineered solutions.



1-ton M55 hoist with motorized trolley

THIS EQUIPMENT IS NOT TO BE USED FOR LIFTING OR SUPPORTING PEOPLE.

M55 ELECTRIC HOIST

STANDARD FEATURES:

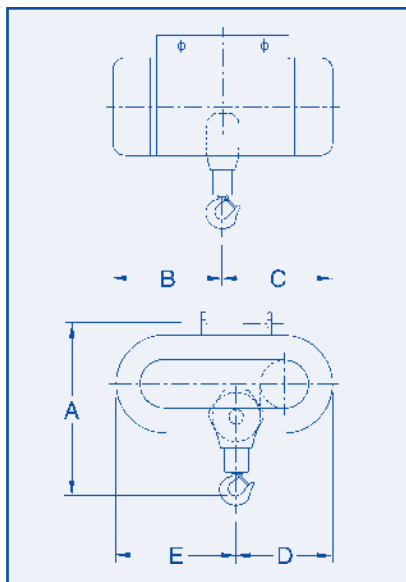
- Moderate service (H3) hoist
- Accessible in-line gear train
- Mechanical load brake
- Electric motor brake
- Emergency upper limit switch
- Single-reeved
- Reversing controls and pendant
- Thermal overload protection
- Lug mounted
- 220/440 Volts – 60 Hz – 3 Phase

OPTIONAL FEATURES:

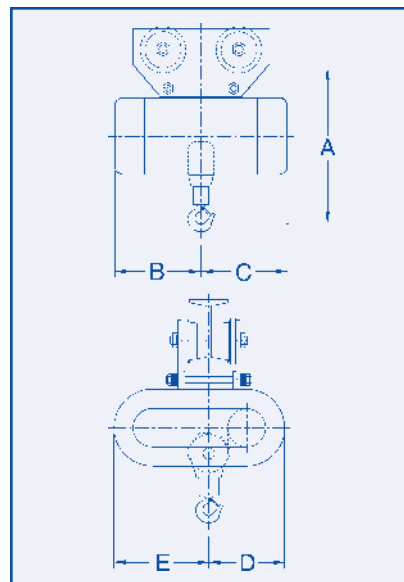
- Manual and motorized trolleys
- Single phase versions
- Upper and lower hook position limit switch
- Two-speed, half speed and variable speed operation
- Soft-start trolley controls
- Hazardous environment upgrades/spark resistant features
- Weather-resistant finishes and components
- Programmable load limit controller

Technical Specifications				
Load Capacity (lbs.)	Model Number	Lift Height (ft.)	Lift Speed (ft./min.)	Reference Number
1,000	M55W-1-40-17	40	17	1
	M55W-1-40-25		25	
	M55W-1-40-35		35	
	M55W-1-40-50	50	50	2
	M55L-1-50-17		17	
	M55L-1-50-25		25	
	M55L-1-50-35	35	3	
	M55L-1-100-17	100		17
	M55L-1-100-25			25
M55L-1-100-35	35			
2,000	M55W-2-40-17	40	17	1
	M55W-2-40-25		25	
	M55W-2-40-35		35	
	M55L-2-50-17	50	17	2
	M55L-2-50-25		25	
	M55L-2-50-35		35	
	M55L-2-100-17	100	17	3
	M55L-2-100-25		25	
	M55L-2-100-35		35	
4,000	M55W-4-20-12	20	12	4
	M55W-4-20-17		17	

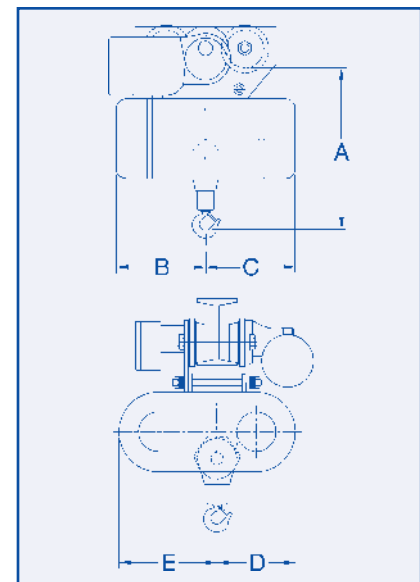
Information on other models available from a David Round representative.



Lug Mount



Push Trolley



Motorized Trolley

Dimensions										
Reference Number	Mounting						B (in.)	C (in.)	D (in.)	E (in.)
	Lug		Push Trolley		Motorized Trolley					
	Headroom A (in.)	Weight (lbs.)	Headroom A (in.)	Weight (lbs.)	Headroom A (in.)	Weight (lbs.)				
1	16	160	18	195	18-1/4	270	11-1/8	11-1/8	8	10
2	16	340	18	400	18-1/4	500	19	19	9-1/4	12-3/4
3	16	370	18	430	18-1/4	530	19	19	9-1/4	12-3/4
4	20-1/4	200	22-1/8	235	22-3/4	310	11-1/8	11-1/8	8	10

Special configurations and designs are available.

THIS EQUIPMENT IS NOT TO BE USED FOR LIFTING OR SUPPORTING PEOPLE.